

Product datasheet for **AP32132PU-N**

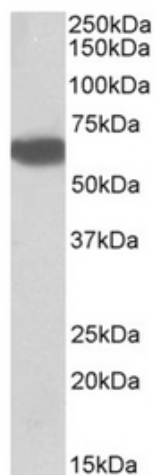
BTD (372-385) Goat Polyclonal Antibody

Product data:

Product Type:	Primary Antibodies
Applications:	WB
Recommended Dilution:	Peptide ELISA: 1/4000 (Detection Limit). Western Blot: 0.5-1.5 µg/ml. Approx 60kDa band observed in Human Liver lysates (calculated MW of 61.1kDa according to NP_000051.1).
Reactivity:	Human
Host:	Goat
Clonality:	Polyclonal
Immunogen:	Peptide with sequence from the internal region of the protein sequence according to NP_000051.1.
Specificity:	This antibody detects Biotinidase (372-385).
Formulation:	Tris saline, pH~7.3 State: Aff - Purified State: Liquid purified IgG fraction Stabilizer: 0.5% BSA Preservative: 0.02% Sodium Azide
Concentration:	lot specific
Purification:	Ammonium Sulphate Precipitation followed by Antigen Affinity Chromatography using the immunizing peptide
Conjugation:	Unconjugated
Storage:	Store undiluted at 2-8°C for one month or (in aliquots) at -20°C for longer. Avoid repeated freezing and thawing.
Stability:	Shelf life: one year from despatch.
Gene Name:	biotinidase
Database Link:	Entrez Gene 686 Human P43251
Synonyms:	BTD, Biotinase



[View online »](#)

Product images:

Staining of Human Liver lysate using Biotinidase antibody at 0.5 ug/ml (35ug protein in RIPA buffer). Primary incubation was 1 hour. Detected by chemiluminescence.