

Product datasheet for **AP32085PU-N**

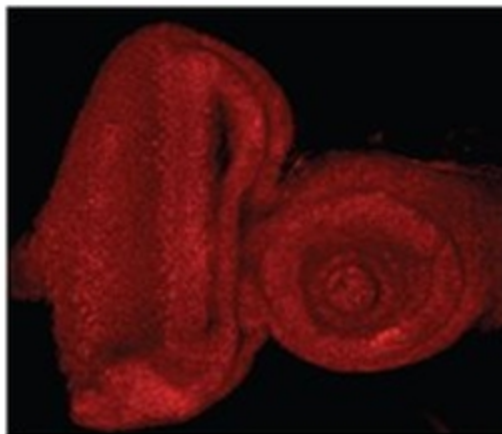
E2f (480-493) Goat Polyclonal Antibody

Product data:

| | |
|-----------------------|--|
| Product Type: | Primary Antibodies |
| Applications: | IF |
| Recommended Dilution: | Peptide ELISA: 1/32000 (Detection Limit). Immunofluorescence: 0.3-1 µg/ml. This antibody shows identical pattern in the Drosophila eye-antennal imaginal disc as was observed before with a different antibody (Moon et al, <i>Mol Cell Biol.</i> 2006 Oct;26(20):7601-15. PMID: 16954388). |
| Reactivity: | Drosophila |
| Host: | Goat |
| Clonality: | Polyclonal |
| Immunogen: | Peptide with sequence from the internal region of the protein sequence according to NP_524437.2. |
| Specificity: | This antibody recognizes E2F1 (Drosophila, aa480-493). |
| Formulation: | Tris saline, pH~7.3 State: Aff - Purified State: Liquid purified IgG fraction Stabilizer: 0.5% BSA Preservative: 0.02% Sodium Azide |
| Concentration: | lot specific |
| Purification: | Ammonium Sulphate Precipitation followed by Antigen Affinity Chromatography using the immunizing peptide |
| Conjugation: | Unconjugated |
| Storage: | Store undiluted at 2-8°C for one month or (in aliquots) at -20°C for longer. Avoid repeated freezing and thawing. |
| Stability: | Shelf life: one year from despatch. |
| Database Link: | Q27368 |
| Synonyms: | E2F-1, RBBP3, PBR3 |



[View online »](#)

Product images:

E2F1 Antibody staining of the Drosophila Eye-Antennal Imaginal Disc at 0.5 ug/ml. Data obtained from Dr. Nam-Sung Moon, McGill University, Montreal, Canada.