

## Product datasheet for **AP32081PU-N**

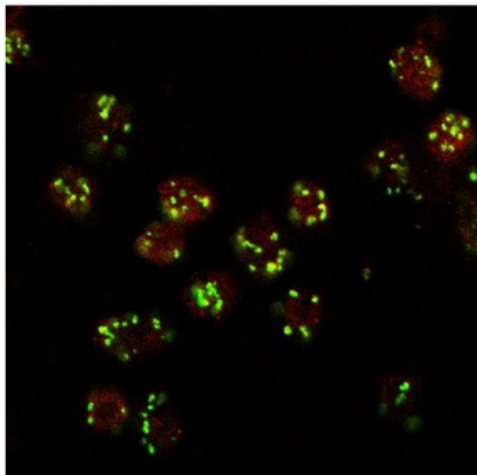
### Iva (internal) Goat Polyclonal Antibody

#### Product data:

Product Type:	Primary Antibodies
Applications:	IF
Recommended Dilution:	<b>Peptide ELISA:</b> 1/32000 (Detection Limit). <b>Immunocytochemistry:</b> 10 µg/ml. Colabeling with GM130 of Golgi in 4% PFA-fixed Drosophila S2 cells.
Reactivity:	Drosophila
Host:	Goat
Clonality:	Polyclonal
Immunogen:	Peptide with sequence from the internal region of the protein sequence according to NP_525064.1.
Specificity:	Detects internal region of Lava Lamp.
Formulation:	Tris saline, pH~7.3 State: Aff - Purified State: Liquid purified Ig fraction Stabilizer: 0.5% BSA Preservative: 0.02% Sodium Azide
Concentration:	lot specific
Purification:	Ammonium Sulphate Precipitation followed by Antigen Affinity Chromatography using the immunizing peptide
Conjugation:	Unconjugated
Storage:	Store undiluted at 2-8°C for one month or (in aliquots) at -20°C for longer. Avoid repeated freezing and thawing.
Stability:	Shelf life: one year from despatch.
Database Link:	<a href="#">Q8MSS1</a>
Synonyms:	Protein lava lamp, Iva



[View online »](#)

**Product images:**

LVA Antibody staining at 10 ug/ml (red, AlexaFluor 555) of Drosophila S2 cells, co-stained with MG130 Rabbit antibody (green, AlexaFluor 488). The yellow spots indicate co-localization of the two proteins. Data obtained by F. Riedel and S Munro, MRC Laboratory of Mol Biol, Cambridge, UK