

Product datasheet for **AP32080PU-N**

BOB1 (POU2AF1) (C-term) Goat Polyclonal Antibody

Product data:

Product Type:	Primary Antibodies
Applications:	ELISA, IHC, WB
Recommended Dilution:	Peptide ELISA: 1/8000 (Detection Limit). Western Blot: 1-2 µg/ml. In transfected HEK293 transiently expressing full-length Human POU2AF1 (<i>myc</i> and <i>DYKDDDDK</i> tagged), a band of approx. 38kDa was observed. No bands were observed in mock-transfected HEK293 and the same band was observed using anti- <i>DYKDDDDK</i> tag antibody. Immunohistochemistry on Paraffin Sections: 3-5 µg/ml. In paraffin embedded Human Spleen shows nuclear staining in the germinal center with stronger nucleoli staining in some of the B cells. Purchase the <i>Positive Control!</i> The transfected lysate used to QC this product is available for sale.
Reactivity:	Bovine, Canine, Human
Host:	Goat
Clonality:	Polyclonal
Immunogen:	Peptide with sequence from the C-Terminus of Human POU2AF1 (NP_006226.2)
Specificity:	This antibody detects POU2AF1 / BOB1 at C-term.
Formulation:	Tris saline, pH~7.3 State: Aff - Purified State: Liquid purified IgG fraction Stabilizer: 0.5% BSA Preservative: 0.02% Sodium Azide
Concentration:	lot specific
Purification:	Ammonium Sulphate Precipitation followed by Antigen Affinity Chromatography using the immunizing peptide
Conjugation:	Unconjugated
Storage:	Store undiluted at 2-8°C for one month or (in aliquots) at -20°C for longer. Avoid repeated freezing and thawing.
Stability:	Shelf life: one year from despatch.



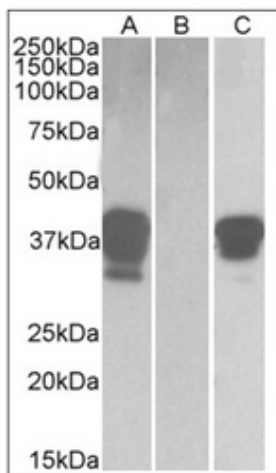
[View online »](#)

Gene Name: POU class 2 associating factor 1

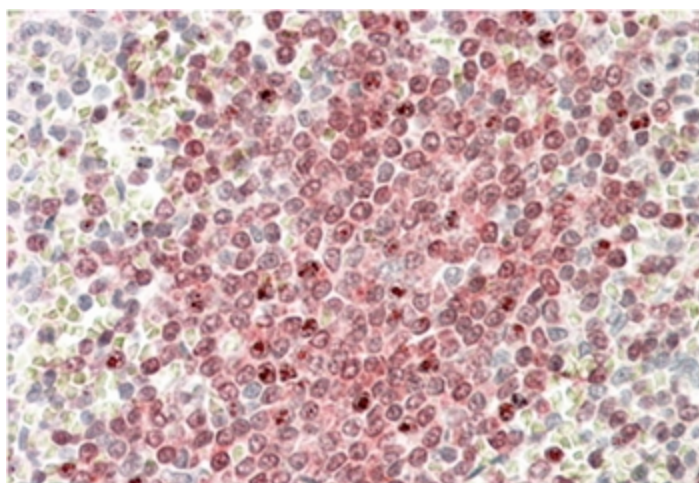
Database Link: [Entrez Gene 5450 Human Q16633](#)

Synonyms: OBF1, OBF-1, OCA-B, OCAB

Product images:



HEK293 lysate (10 ug protein in RIPA buffer) overexpressing Human POU2AF1 with DYKDDDDK tag probed with POU2AF1 Antibody (1 ug/ml) in Lane A and probed with anti-DYKDDDDK Tag (1/3000) in Lane C. Mock-transfected HEK293 probed with POU2AF1 Antibody (1 mg/ml) in Lane B. Primary incubations were for 1 hour. Detected by chemiluminescence.



Paraffin Embedded Human Spleen using POU2AF1 / BOB1 Antibody shows nuclear staining in the germinal center with stronger nucleoli staining in some of the B cells.