

Product datasheet for **AP32070PU-N**

Adgre5 (C-term) Goat Polyclonal Antibody

Product data:

Product Type:	Primary Antibodies
Applications:	ELISA, WB
Recommended Dilution:	Peptide ELISA: 1/128000 (Detection Limit). Western blot: 0.3-1 µg/ml. Detects a band of Approx 80kDa in Mouse Thymus and Spleen lysates (Figure 1). The beta chain is detected as a ~30kDa band in Mouse Colon (transgenic overexpressing Cd76 in intestines) and not in the knock-out (Figure 2).
Reactivity:	Mouse
Host:	Goat
Clonality:	Polyclonal
Immunogen:	Peptide with sequence from the C-Terminus of the protein sequence according to NP_036055.2; NP_001156501.1; NP_001156502.1; NP_001156503.1.
Specificity:	This antibody is expected to recognize all reported isoforms (NP_036055.2; NP_001156501.1; NP_001156502.1; NP_001156503.1).
Formulation:	Tris saline, pH~7.3 State: Aff - Purified State: Liquid purified Ig fraction Stabilizer: 0.5% BSA Preservative: 0.02% Sodium Azide
Concentration:	lot specific
Purification:	Ammonium Sulphate Precipitation followed by Antigen Affinity Chromatography using the immunizing peptide
Conjugation:	Unconjugated
Storage:	Store undiluted at 2-8°C for one month or (in aliquots) at -20°C for longer. Avoid repeated freezing and thawing.
Stability:	Shelf life: one year from despatch.
Predicted Protein Size:	80.2 kDa (NP_001156503.1).
Gene Name:	adhesion G protein-coupled receptor E5



[View online »](#)

Database Link: [Entrez Gene 26364 Mouse Q9Z0M6](#)

Product images:

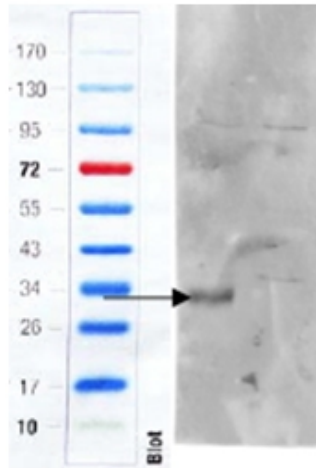


Figure 2. Staining of Mouse Colon using CD97 antibody at 1 ug/ml (wt, left lane, knock-out right lane) lysate (35 ug protein in RIPA buffer). Primary incubation was 1 hour. Detected by infrared fluorescence (Odyssey). Data obtained from anonymous customer.

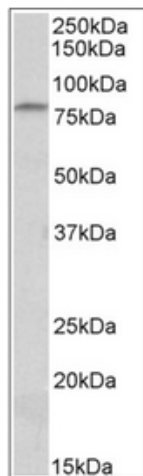


Figure 1. Staining of Mouse Thymus lysate using CD97 Antibody at 0.3 ug/ml (35ug protein in RIPA buffer). Primary incubation was 1 hour. Detected by chemiluminescence.