

## Product datasheet for **AP32069PU-N**

### AP2 alpha (AP2A1) (706-727) Goat Polyclonal Antibody

#### Product data:

Product Type:	Primary Antibodies
Applications:	IHC, PEP-ELISA, WB
Recommended Dilution:	<b>Peptide ELISA:</b> 1/128000 (Detection Limit). <b>Western blot:</b> 0.01-0.03 µg/ml. Approx 110kDa band observed in Human Brain (Frontal Cortex) lysates (calculated MW of 108kDa according to NP_055018.2). The same band is observed in Mouse Brain, but not in Mouse Liver or Mouse Kidney lysates. <b>Immunocytochemistry:</b> HeLa stably expressing a chimeric construct including the brain-specific splice variant of Mouse Ap2a1, showing clathrin-coated pits and vesicles budding from the plasma membrane.
Reactivity:	Bovine, Human, Mouse, Porcine, Rat
Host:	Goat
Clonality:	Polyclonal
Immunogen:	Peptide with sequence from the internal region of the protein sequence according to NP_055018.2.
Specificity:	This antibody is expected to recognize reported isoform 1 (NP_055018.2) only.
Formulation:	Tris saline, pH~7.3 State: Aff - Purified State: Liquid purified Ig fraction Stabilizer: 0.5% BSA Preservative: 0.02% Sodium Azide
Concentration:	lot specific
Purification:	Ammonium Sulphate Precipitation followed by Antigen Affinity Chromatography using the immunizing peptide
Conjugation:	Unconjugated
Storage:	Store undiluted at 2-8°C for one month or (in aliquots) at -20°C for longer. Avoid repeated freezing and thawing.
Stability:	Shelf life: one year from despatch.
Gene Name:	adaptor related protein complex 2 alpha 1 subunit

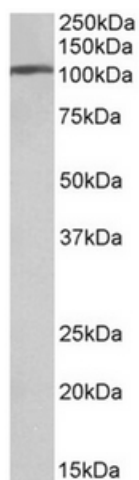


[View online »](#)

Database Link: [Entrez Gene 160 Human](#)  
[O95782](#)

Synonyms: CLAPA1, Alpha adaptin A, Alpha-1 adaptin, AP2 complex subunit alpha-1

### Product images:



Staining of Human Frontal Cortex lysate using AP2A1 Antibody at 0.01 ug/ml (35ug protein in RIPA buffer). Primary incubation was 1 hour. Detected by chemiluminescence