

Product datasheet for **AP32067PU-N**

EEF1A2 Goat Polyclonal Antibody

Product data:

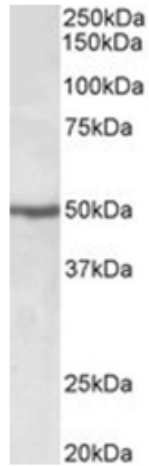
Product Type:	Primary Antibodies
Applications:	ELISA, WB
Recommended Dilution:	Peptide ELISA: 1/8000 (Detection Limit). Western blot: 0.5-2 µg/ml. Approx 50kDa band observed in lysates of cell lines Daudi and Jurkat (calculated MW of 50.5kDa according to NP_001949.1). The same band is observed in lysates of Mouse and Rat Heart and Skeletal Muscle.
Reactivity:	Bovine, Canine, Human, Mouse, Rat
Host:	Goat
Clonality:	Polyclonal
Immunogen:	Peptide with sequence from the internal region of the protein sequence according to NP_001949.1.
Specificity:	This antibody recognizes EEF1A2.
Formulation:	Tris saline, pH~7.3 State: Aff - Purified State: Liquid purified Ig fraction Stabilizer: 0.5% BSA Preservative: 0.02% Sodium Azide
Concentration:	lot specific
Purification:	Ammonium Sulphate Precipitation followed by Antigen Affinity Chromatography using the immunizing peptide
Conjugation:	Unconjugated
Storage:	Store undiluted at 2-8°C for one month or (in aliquots) at -20°C for longer. Avoid repeated freezing and thawing.
Stability:	Shelf life: one year from despatch.
Gene Name:	eukaryotic translation elongation factor 1 alpha 2
Database Link:	Entrez Gene 1917 Human Q05639



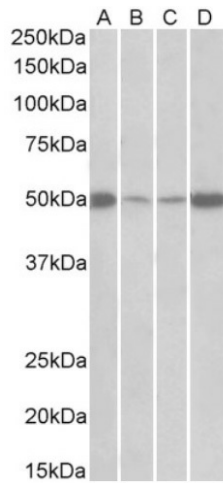
[View online »](#)

Synonyms:

EF-1-alpha-2, eEF1A-2, Statin S1, EEF1AL, STN, HS1,EF1A, STNL, FLJ41696, Elongation factor 1-alpha 2

Product images:


Staining of Jurkat lysate using EEF1A2 Antibody at 0.5 ug/ml (35ug protein in RIPA buffer). Primary incubation was 1 hour. Detected by chemiluminescence.



Staining of Mouse (A+C) and Rat (B+D) Skeletal Muscle (A+B) and Heart (C+D) lysates using EEF1A2 Antibody at 0.5 mg/ml (35ug protein in RIPA buffer). Primary incubation was 1 hour. Detected by chemiluminescence.