

Product datasheet for **AP32056PU-N**

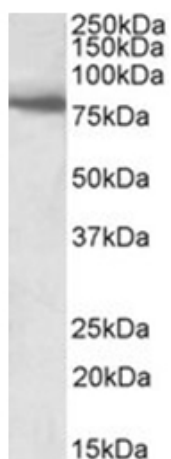
BBS7 Goat Polyclonal Antibody

Product data:

Product Type:	Primary Antibodies
Applications:	ELISA, WB
Recommended Dilution:	Peptide ELISA: 1/128000 (Detection Limit). Western blot: 1-3 µg/ml. Approx 80kDa band observed in Human Skeletal Muscle lysates (calculated MW of 80.4kDa according to NP_789794.1).
Reactivity:	Bovine, Canine, Human, Mouse, Rat
Host:	Goat
Clonality:	Polyclonal
Immunogen:	Peptide with sequence from the internal region of the protein sequence according to NP_789794.1; NP_060660.2.
Specificity:	This antibody is expected to recognize both isoforms of BBS7 (NP_789794.1; NP_060660.2).
Formulation:	Tris saline, pH~7.3 State: Aff - Purified State: Liquid purified Ig fraction Stabilizer: 0.5% BSA Preservative: 0.02% Sodium Azide
Concentration:	lot specific
Purification:	Ammonium Sulphate Precipitation followed by Antigen Affinity Chromatography using the immunizing peptide
Conjugation:	Unconjugated
Storage:	Store undiluted at 2-8°C for one month or (in aliquots) at -20°C for longer. Avoid repeated freezing and thawing.
Stability:	Shelf life: one year from despatch.
Gene Name:	Bardet-Biedl syndrome 7
Database Link:	Entrez Gene 55212 Human Q8IWZ6
Synonyms:	Bardet-Biedl syndrome 7 protein, BBS2-like Protein 1



[View online »](#)

Product images:

Staining of Human Skeletal Muscle lysate using BBS7 Antibody at 1 ug/ml (35ug protein in RIPA buffer). Primary incubation was 1 hour. Detected by chemiluminescence.