

Product datasheet for **AP32045PU-N**

MSK1 (RPS6KA5) Rabbit Polyclonal Antibody

Product data:

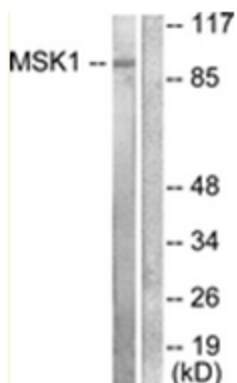
Product Type:	Primary Antibodies
Applications:	ELISA, IF, IHC, WB
Recommended Dilution:	ELISA: 1/1000. Immunofluorescence: 1/100 - 1/500. Immunohistochemistry on Paraffin Sections: 1/200. Western Blot: 1/500 - 1/1000.
Reactivity:	Human, Mouse
Host:	Rabbit
Isotype:	IgG
Clonality:	Polyclonal
Immunogen:	Synthetic peptide derived from Internal region of Human MSK1
Specificity:	This antibody detects endogenous levels of total MSK1 protein.
Formulation:	PBS (without Mg ²⁺ and Ca ²⁺), pH 7.4, 150mM NaCl, 0.02% Sodium Azide and 50% Glycerol State: Aff - Purified State: Liquid purified IgG fraction
Concentration:	lot specific
Purification:	Affinity Chromatography using epitope-specific immunogen
Conjugation:	Unconjugated
Storage:	Store undiluted at 2-8°C for one month or (in aliquots) at -20°C for longer. Avoid repeated freezing and thawing.
Stability:	Shelf life: one year from despatch.
Predicted Protein Size:	89 kDa
Gene Name:	ribosomal protein S6 kinase A5
Database Link:	Entrez Gene 9252 Human Q75582
Background:	MSK1 is a mitogen- and stress-activated protein kinase that belongs to the MSK family. In vivo, the MSKs act as ERK MAPK and p38 MAPK substrates. MSK1, and likely MSK2, localize to the nucleus and are strong CREB kinases.



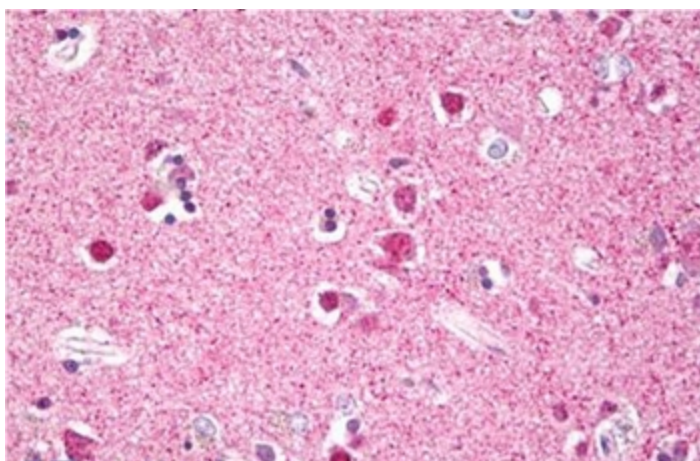
[View online »](#)

Synonyms: Ribosomal protein S6 kinase alpha-5, RSKL

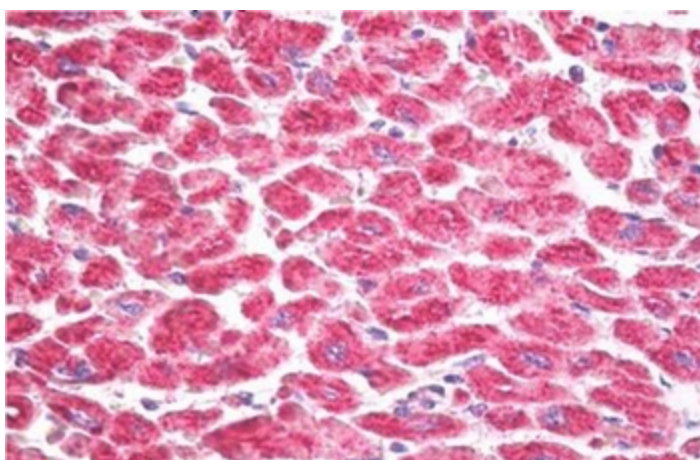
Product images:



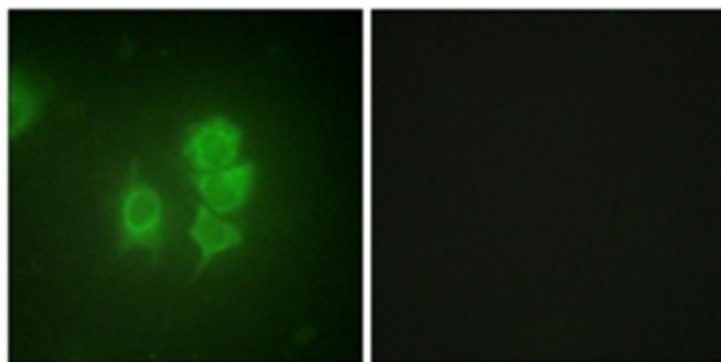
Western blot analysis of extracts from 293 cells, treated with UV 15', using MSK1 Antibody. The lane on the right is treated with the synthesized peptide.



Formalin-Fixed, Paraffin-Embedded Human Brain, Cortex Neurons stained with MSK1 Antibody



Formalin-Fixed, Paraffin-Embedded Human Heart stained with MSK1 Antibody



Immunofluorescence analysis of HuvEc cells, using MSK1 Antibody. The picture on the right is treated with the synthesized peptide.