

Product datasheet for **AP32042SU-N**

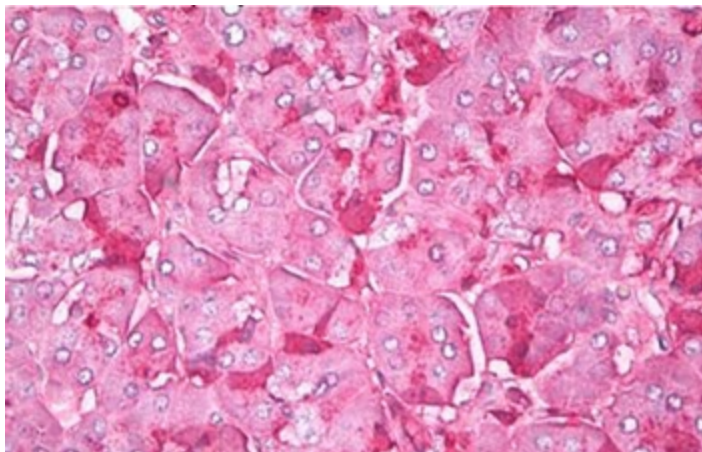
CTRB1 Rabbit Polyclonal Antibody

Product data:

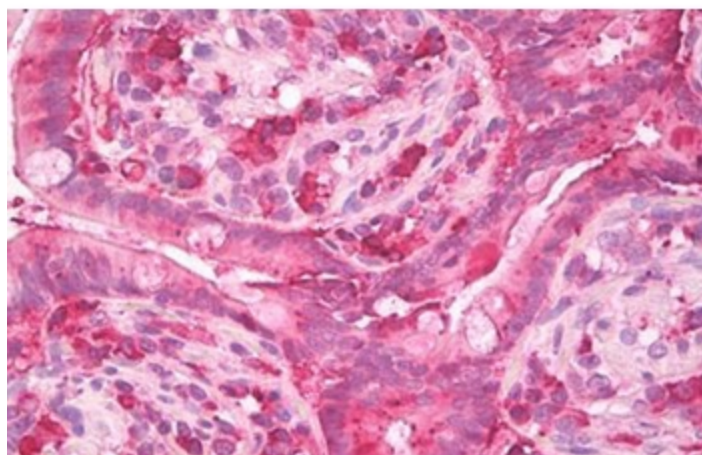
| | |
|-----------------------|--|
| Product Type: | Primary Antibodies |
| Applications: | ELISA, IHC |
| Recommended Dilution: | ELISA. Immunohistochemistry on Paraffin Sections: 1/100. |
| Reactivity: | Human |
| Host: | Rabbit |
| Clonality: | Polyclonal |
| Immunogen: | Human Pancreas Chymotrypsin |
| Specificity: | This antibody recognizes Human Chymotrypsin (100 %). |
| Formulation: | State: Serum State: Neat Serum |
| Conjugation: | Unconjugated |
| Storage: | Store undiluted at 2-8°C for one month or (in aliquots) at -20°C for longer. Avoid repeated freezing and thawing. |
| Stability: | Shelf life: one year from despatch. |
| Gene Name: | chymotrypsinogen B1 |
| Database Link: | Entrez Gene 1504 Human P17538 |
| Synonyms: | CTRB1, CTRB, Chymotrypsinogen B |



[View online »](#)

Product images:

Formalin-Fixed, Paraffin-Embedded Human Pancreas stained with Chymotrypsin Antibody
Cat.-No AP32042SU-N



Formalin-Fixed, Paraffin-Embedded Human Small Intestine stained with Chymotrypsin Antibody
Cat.-No AP32042SU-N