

Product datasheet for **AP32035PU-N**

alpha Synuclein (SNCA) Goat Polyclonal Antibody

Product data:

Product Type:	Primary Antibodies
Applications:	WB
Recommended Dilution:	Peptide ELISA: 1/128000 (Detection Limit). Western blot: 0.1-0.3 µg/ml. Detects a band of Approx 17kDa in Human Brain (Amygdala) and fetal Mouse Brain lysates.
Reactivity:	Canine, Human, Mouse, Porcine, Rat
Host:	Goat
Clonality:	Polyclonal
Immunogen:	Synthetic peptide from the the internal region of Human Alpha-Synuclein / SNCA (NP_009292.1; NP_000336.1)
Specificity:	This antibody is expected to recognize both reported isoforms of Alpha-Synuclein / SNCA (NP_009292.1; NP_000336.1). Reported variants represent identical protein: NP_000336.1, NP_001139527.1, NP_001139526.1.
Formulation:	Tris saline, pH~7.3 State: Aff - Purified State: Liquid purified Ig fraction Stabilizer: 0.5% BSA Preservative: 0.02% Sodium Azide
Concentration:	lot specific
Purification:	Affinity Chromatography
Conjugation:	Unconjugated
Storage:	Store undiluted at 2-8°C for one month or (in aliquots) at -20°C for longer. Avoid repeated freezing and thawing.
Stability:	Shelf life: one year from despatch.
Predicted Protein Size:	14.5 kDa (Human NP_000336.1 and Mouse NP_033247.1)
Gene Name:	synuclein alpha

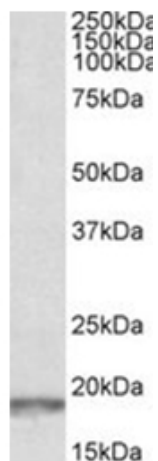


[View online »](#)

Database Link: [Entrez Gene 6622 Human P37840](#)

Synonyms: NACP, PARK1

Product images:



Alpha-Synuclein / SNCA Antibody staining of fetal Mouse Brain lysate at 0.1 ug/ml (35ug protein in RIPA buffer). Primary incubation was 1 hour. Detected by chemiluminescence