

Product datasheet for **AP32033PU-N**

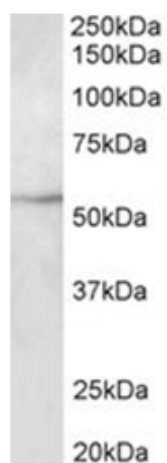
beta III Tubulin (TUBB3) Goat Polyclonal Antibody

Product data:

Product Type:	Primary Antibodies
Applications:	WB
Recommended Dilution:	Peptide ELISA: 1/1000 (Detection Limit). Western blot: 1-3 µg/ml. Detects a band of Approx 52kDa band observed in lysates of cell line HepG2.
Reactivity:	Bovine, Human, Mouse, Porcine, Rat
Host:	Goat
Clonality:	Polyclonal
Immunogen:	Synthetic peptide from the internal region (near N terminus) of Human TUBB3 (NP_006077.2).
Specificity:	This antibody is expected to recognize isoform 1 (NP_006077.2) only.
Formulation:	Tris saline, pH~7.3 State: Aff - Purified State: Liquid purified Ig fraction Stabilizer: 0.5% BSA Preservative: 0.02% Sodium Azide
Concentration:	lot specific
Purification:	Ammonium sulphate precipitation followed by antigen affinity chromatography using the immunizing peptide.
Conjugation:	Unconjugated
Storage:	Store undiluted at 2-8°C for one month or (in aliquots) at -20°C for longer. Avoid repeated freezing and thawing.
Stability:	Shelf life: one year from despatch.
Predicted Protein Size:	50.4 kDa (NP_006077.2).
Database Link:	Entrez Gene 10381 Human Q13509
Synonyms:	Tubulin beta-3 chain, Tubulin beta-III, Tubulin beta-4



[View online »](#)

Product images:

TUBB3 Antibody staining of HepG2 lysate at 2 ug/ml (35ug protein in RIPA buffer). Primary incubation was 1 hour. Detected by chemiluminescence.