

Product datasheet for **AP32028PU-N**

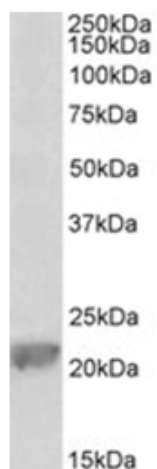
Gpx1 (53-67) Goat Polyclonal Antibody

Product data:

Product Type:	Primary Antibodies
Applications:	WB
Recommended Dilution:	Peptide ELISA: 1/128000 (Detection Limit). Western blot: 0.1-0.3 µg/ml. Detects a band of Approx 22kDa in Rat Kidney and Liver lysates and in Mouse Kidney lysates.
Reactivity:	Bovine, Mouse, Rat
Host:	Goat
Clonality:	Polyclonal
Immunogen:	Synthetic peptide from the the internal region of the protein sequence according to NP_032186.2.
Specificity:	This antibody recognizes Glutathione peroxidase 1 / GPX1 (53-67).
Formulation:	Tris saline, pH~7.3 State: Aff - Purified State: Liquid purified Ig fraction Stabilizer: 0.5% BSA Preservative: 0.02% Sodium Azide
Concentration:	lot specific
Purification:	Ammonium sulphate precipitation followed by antigen affinity chromatography using the immunizing peptide.
Conjugation:	Unconjugated
Storage:	Store undiluted at 2-8°C for one month or (in aliquots) at -20°C for longer. Avoid repeated freezing and thawing.
Stability:	Shelf life: one year from despatch.
Predicted Protein Size:	22.3 kDa (NP_032186.2).
Gene Name:	glutathione peroxidase 1
Database Link:	Entrez Gene 14775 Mouse P11352
Synonyms:	GSHPx-1, Cellular glutathione peroxidase



[View online »](#)

Product images:

Glutathione peroxidase 1 / GPX1 Antibody staining of Rat Liver lysate at 0.1 ug/ml (35ug protein in RIPA buffer). Primary incubation was 1 hour. Detected by chemiluminescence.