

## Product datasheet for **AP32027PU-N**

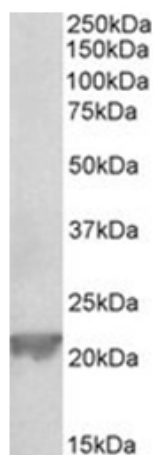
### Gpx1 Goat Polyclonal Antibody

#### Product data:

Product Type:	Primary Antibodies
Applications:	WB
Recommended Dilution:	<b>Peptide ELISA:</b> 1/64000 (Detection Limit). <b>Western blot:</b> 0.3-1 µg/ml. Detects a band of Approx 22kDa in Mouse and Rat Kidney and Liver lysates.
Reactivity:	Bovine, Mouse, Rat
Host:	Goat
Clonality:	Polyclonal
Immunogen:	Synthetic peptide from the the internal region (near N Terminus) of the protein sequence according to NP_032186.2.
Formulation:	Tris saline, pH~7.3 State: Aff - Purified State: Liquid purified Ig fraction Stabilizer: 0.5% BSA Preservative: 0.02% Sodium Azide
Concentration:	lot specific
Purification:	Affinity Chromatography
Conjugation:	Unconjugated
Storage:	Store undiluted at 2-8°C for one month or (in aliquots) at -20°C for longer. Avoid repeated freezing and thawing.
Stability:	Shelf life: one year from despatch.
Predicted Protein Size:	22.3 kDa (NP_032186.2).
Gene Name:	glutathione peroxidase 1
Database Link:	<a href="#">Entrez Gene 14775 Mouse P11352</a>
Synonyms:	GSHPx-1, Cellular glutathione peroxidase



[View online »](#)

**Product images:**

Glutathione peroxidase 1 / GPX1 Antibody at 0.3 ug/ml staining of Rat Liver lysate (35ug protein in RIPA buffer). Primary incubation was 1 hour. Detected by chemiluminescence.