

Product datasheet for **AP31997PU-N**

CCR1 (7-24) Goat Polyclonal Antibody

Product data:

Product Type:	Primary Antibodies
Applications:	ELISA, IF, IHC, WB
Recommended Dilution:	ELISA: 1/100000. Immunocytochemistry: 1/400. Immunohistochemistry on Paraffin Sections: 5 µg/ml. Western Blot: 1/1000.
Reactivity:	Human
Host:	Goat
Clonality:	Polyclonal
Immunogen:	Synthetic peptide corresponding to amino acids 7-24 of the N-terminal extracellular domain of Human CCR1
Specificity:	This antibody recognizes CCR1 (N-term).
Formulation:	10 mM KHPO ₄ , 140 mM NaCl with 1 mg/ml BSA and 0.09% sodium azide State: Aff - Purified State: Liquid purified Ig fraction
Concentration:	lot specific
Purification:	Immunoaffinity Chromatography
Conjugation:	Unconjugated
Storage:	Store undiluted at 2-8°C for one month or (in aliquots) at -20°C for longer. Avoid repeated freezing and thawing.
Stability:	Shelf life: one year from despatch.
Gene Name:	C-C motif chemokine receptor 1
Database Link:	Entrez Gene 1230 Human P32246
Background:	CCR1, a Chemokine Receptor, affects stem cell proliferation and mediates systemic inflammatory responses. This receptor is stimulated by the beta chemokines RANTES, MCP-1, and MIP-1 alpha. Disruption of CCR1 enhances protection from pulmonary inflammation and reduces the development of respiratory distress syndrome in rat.

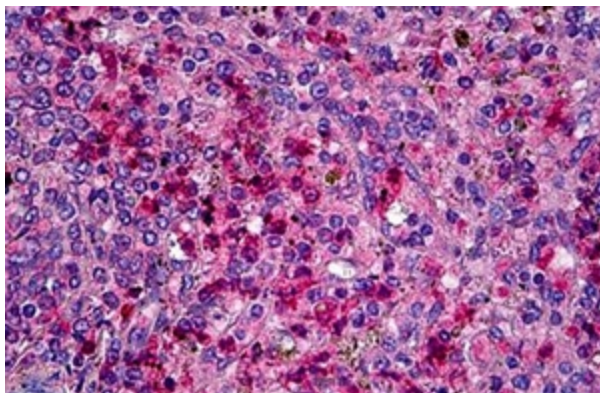


[View online »](#)

Synonyms: C-C chemokine receptor type 1, C-C CKR-1, CC-CKR-1, CCR-1, CMKBR1, CMKR1, SCYAR1, HM145, LD78 receptor

Note: Peptide sequence is <50 % identical to other chemokine receptors in this region and has no cross-reactivity to mouse CCR.

Product images:



Formalin-Fixed, Paraffin-Embedded tissue stained with CCR1 antibody at 5 ug/ml after heat-induced antigen retrieval.