

Product datasheet for **AP31992PU-N**

beta 2 Microglobulin (B2M) (65-79) Goat Polyclonal Antibody

Product data:

Product Type:	Primary Antibodies
Applications:	ELISA, WB
Recommended Dilution:	Peptide ELISA: 1/32000 (Detection limit). Western blot: 0.03-0.1 µg/ml. Detects a band of Approx 12kDa in Human Duodenum lysates (calculated MW of 13.7kDa according to NP_004039.1).
Reactivity:	Bovine, Human
Host:	Goat
Clonality:	Polyclonal
Immunogen:	Synthetic peptide with sequence from the internal region of Human beta-2-Microglobulin (NP_004039.1).
Specificity:	This antibody recognizes beta-2-microglobulin (65-79).
Formulation:	Tris saline, pH~7.3 State: Aff - Purified State: Liquid purified Ig fraction Stabilizer: 0.5% BSA Preservative: 0.02% Sodium Azide
Concentration:	lot specific
Purification:	Affinity Chromatography
Conjugation:	Unconjugated
Storage:	Store the antibody undiluted at 2-8°C for one month or (in aliquots) at -20°C for longer. Avoid repeated freezing and thawing.
Stability:	Shelf life: one year from despatch.
Gene Name:	beta-2-microglobulin
Database Link:	Entrez Gene 567 Human P61769



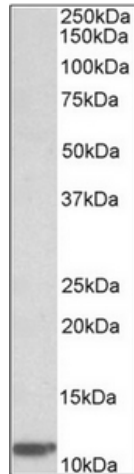
[View online »](#)

Background:

Beta 2 Microglobulin non-covalently associates with the 44 kDa alpha chain to form the HLA Class I antigen complex. Human beta 2 Microglobulin associated with HLA Class I antigens are expressed on many types of cells including lymphocytes, thymocytes, monocytes, granulocytes, platelets, endothelial cells, and epithelial cells. It is absent on erythrocytes.

Synonyms:

B2M, Beta-2 microglobulin, Beta 2 microglobulin

Product images:

B2M antibody staining of Human Duodenum lysate at 0.03 ug/ml (35ug protein in RIPA buffer). Primary incubation was 1 hour. Detected by chemiluminescence.