

Product datasheet for **AP31988PU-N**

EMAP II (AIMP1) (137-149) Goat Polyclonal Antibody

Product data:

Product Type:	Primary Antibodies
Applications:	ELISA, IHC, WB
Recommended Dilution:	Peptide ELISA: 1/32000 (Detection limit). Western blot: 0.1-0.3 µg/ml. Approx 37kDa band observed in Human Lymph Node and Uterus lysates (calculated MW of 37.0kDa according to NP_001135887.1). Immunohistochemistry on Paraffin Sections: 5-10 µg/ml. In paraffin embedded Human Pancreas shows staining in the cytoplasm towards the alpha cells periphery.
Reactivity:	Human, Porcine, Rat
Host:	Goat
Clonality:	Polyclonal
Immunogen:	Peptide with sequence from the internal region of the protein sequence according to NP_004748.2; NP_001135888.1.
Specificity:	This antibody is expected to recognize both reported isoforms (NP_004748.2; NP_001135888.1). Reported variants represent identical protein: NP_004748.2, NP_001135887.1
Formulation:	Tris saline, pH~7.3 State: Aff - Purified State: Liquid purified Ig fraction Stabilizer: 0.5% BSA Preservative: 0.02% Sodium Azide
Concentration:	lot specific
Purification:	Immunoaffinity Chromatography
Conjugation:	Unconjugated
Storage:	Store undiluted at 2-8°C for one month or (in aliquots) at -20°C for longer. Avoid repeated freezing and thawing.
Stability:	Shelf life: one year from despatch.
Gene Name:	aminoacyl tRNA synthetase complex interacting multifunctional protein 1
Database Link:	Entrez Gene 9255 Human Q12904



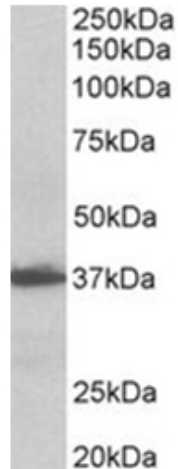
[View online »](#)

Background:

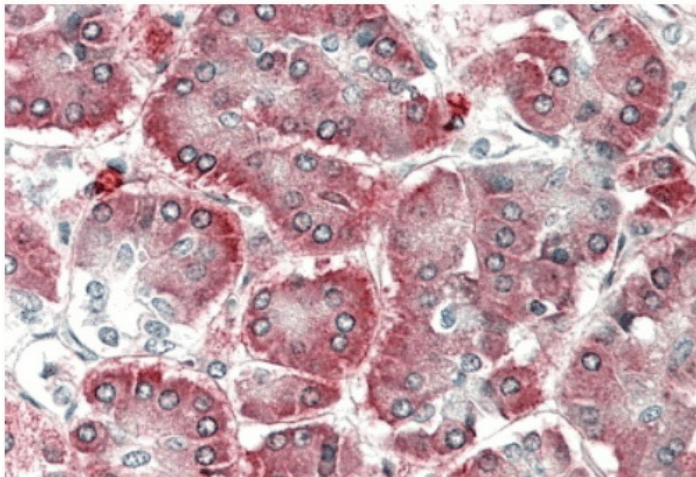
EMAPII is an approximate 20kDa apoptosis-induced pro-inflammatory cytokine, produced by enzymatic cleavage of a precursor identical to the p43 auxiliary component of the aminoacyl-tRNA synthetase complex. Studies have shown the ability of EMAPII to induce monocyte and neutrophil chemotaxis, stimulate tissue factor-dependent coagulation, elevate the expression of E- and P-selectins and tumour necrosis factor receptor-1, induce stress-related apoptosis in endothelial cells, inhibit angiogenesis of vascular beds, and suppress primary and metastatic tumour growth.

Synonyms:

EMAP-2, EMAP-II, AIMP1

Product images:


AIMP1 antibody staining of Human Lymph Node lysate at 0.1 ug/ml (35ug protein in RIPA buffer). Primary incubation was 1 hour. Detected by chemiluminescence.



AIMP1 antibody staining of paraffin embedded Human Pancreas at 5 ug/ml. Steamed antigen retrieval with citrate buffer pH 6, AP-staining.