

Product datasheet for **AP31984PU-N**

Chimaerin 2 (CHN2) (C-term) Goat Polyclonal Antibody

Product data:

Product Type:	Primary Antibodies
Applications:	ELISA, IHC
Recommended Dilution:	Peptide ELISA: 1/8000 (Detection limit). Western blot: Preliminary experiments in Human Brain (Cerebellum and Frontal Cortex) lysates gave no specific signal but low background (at antibody concentration up to 1 µg/ml). We would appreciate any feedback from people in the field - have any results been reported with other antibodies/lysates? Immunohistochemistry on Paraffin Sections: 3-6 µg/ml. In paraffin embedded Human Cortex shows staining of neuronal bodies.
Reactivity:	Bovine, Canine, Human, Mouse
Host:	Goat
Clonality:	Polyclonal
Immunogen:	Peptide with sequence from the C-Terminus of the protein sequence according to NP_001035025.1; NP_004058.1.
Specificity:	This antibody is expected to recognize both reported isoforms (NP_004058.1; NP_001035025.1).
Formulation:	Tris saline pH~7.3 State: Aff - Purified State: Liquid purified Ig fraction Stabilizer: 0.5% BSA Preservative: 0.02% Sodium Azide
Concentration:	lot specific
Purification:	Antigen Affinity Chromatography
Conjugation:	Unconjugated
Storage:	Store the antibody undiluted at 2-8°C for one month or (in aliquots) at -20°C for longer. Avoid repeated freezing and thawing.
Stability:	Shelf life: one year from despatch.
Gene Name:	chimerin 2

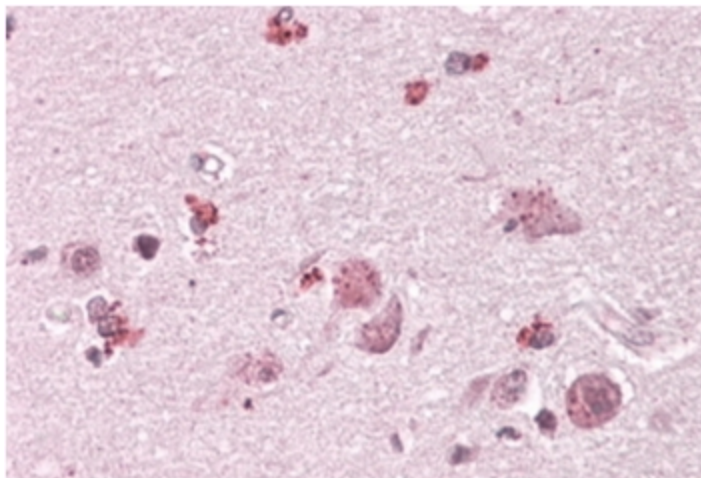


[View online »](#)

Database Link: [Entrez Gene 1124 Human P52757](#)

Synonyms: Beta-chimaerin, BCH, Beta-chimerin

Product images:



CHN2 antibody staining of paraffin embedded Human Cortex at 3.8 ug/ml. Steamed antigen retrieval with citrate buffer pH 6, AP-staining.