

Product datasheet for **AP31982PU-N**

PATJ (N-term) Goat Polyclonal Antibody

Product data:

Product Type:	Primary Antibodies
Applications:	ELISA, IHC
Recommended Dilution:	Peptide ELISA: 1/32000 (Detection limit). Western blot: Preliminary experiments in Human Brain and Kidney lysates consistently showed a strong band at 100kDa followed by bands at ~55kDa, 45kDa and 40kDa at 1 µg/ml. Please note that currently we cannot find an explanation in the literature for the bands we observe given the predicted size of approx. 196Kda according to NP_795352.2. We would appreciate any feedback from people in the field - have any results been reported with other antibodies/lysates? Have any further splice variants/modified forms been reported? Is this protein particularly susceptible to proteolysis? Immunohistochemistry on Paraffin Sections: 3-6 µg/ml. In paraffin embedded Human Testis shows strong staining of spermatids.
Reactivity:	Bovine, Canine, Human, Porcine
Host:	Goat
Clonality:	Polyclonal
Immunogen:	Synthetic peptide with sequence from the N-Terminus of Human INADL (NP_795352.2).
Specificity:	This antibody detects INADL/PATJ at N-term.
Formulation:	Tris saline, pH~7.3 State: Aff - Purified State: Liquid purified Ig fraction Stabilizer: 0.5% BSA Preservative: 0.02% Sodium Azide
Concentration:	lot specific
Purification:	Immunoaffinity Chromatography
Conjugation:	Unconjugated
Storage:	Store the antibody undiluted at 2-8°C for one month or (in aliquots) at -20°C for longer. Avoid repeated freezing and thawing.
Stability:	Shelf life: one year from despatch.
Gene Name:	PATJ, crumbs cell polarity complex component



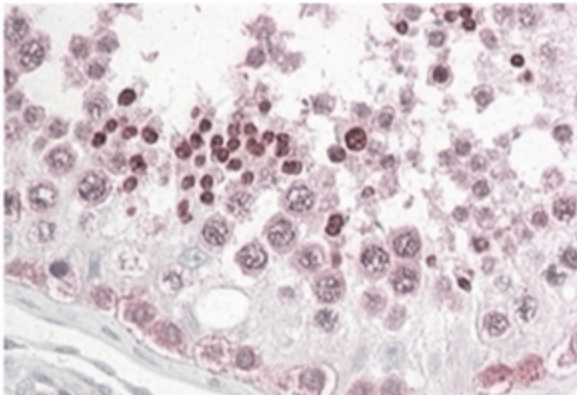
[View online »](#)

Database Link: [Entrez Gene 10207 Human Q8NI35](#)

Background: This gene encodes a protein with multiple PDZ domains. PDZ domains mediate protein-protein interactions, and proteins with multiple PDZ domains often organize multimeric complexes at the plasma membrane. This protein localizes to tight junctions and to the apical membrane of epithelial cells. A similar protein in *Drosophila* is a scaffolding protein which tethers several members of a multimeric signaling complex in photoreceptors. Alternative splicing results in four transcript variants encoding different isoforms. Additional transcript variants have been described but their full-length sequences have not been determined.

Synonyms: PATJ

Product images:



INADL antibody staining of paraffin embedded Human Testis at 3.8 ug/ml. Steamed antigen retrieval with citrate buffer pH 6, AP-staining.