

Product datasheet for **AP31980PU-N**

XAGE1 (XAGE1E) (Isoform 1d) Goat Polyclonal Antibody

Product data:

Product Type:	Primary Antibodies
Applications:	ELISA, IHC
Recommended Dilution:	Peptide ELISA: 1/8000 (Detection limit). Western blot: Not yet tested - our routinely used western blotting protocol does not allow detection of proteins as small as the predicted size of approx. 8.0kDa according to NP_597673. Therefore we cannot recommend an optimal concentration and the product is investigative grade. We would appreciate any feedback from people in the field - have any results been reported with other antibodies/lysates? Have any further splice variants/modified forms been reported? Immunohistochemistry on Paraffin Sections: 3-6 µg/ml. paraffin embedded Human testis shows polar cytoplasm staining in primary spermatocytes.
Reactivity:	Human
Host:	Goat
Clonality:	Polyclonal
Immunogen:	Synthetic peptide with sequence from the C-Terminus of Human XAGE1D / GAGED2 (NP_597673.1).
Specificity:	This antibody is expected to recognise Isoform d (NP_597673.1) only. Reported variants represent identical protein (NP_597673.1; NP_001091067.1; NP_001091074.1; NP_001091062.1; NP_001091065.1).
Formulation:	Tris saline, pH~7.3 State: Aff - Purified State: Liquid purified Ig fraction Stabilizer: 0.5% BSA Preservative: 0.02% Sodium Azide
Concentration:	lot specific
Purification:	Immunoaffinity Chromatography
Conjugation:	Unconjugated
Storage:	Store the antibody undiluted at 2-8°C for one month or (in aliquots) at -20°C for longer. Avoid repeated freezing and thawing.



[View online »](#)

Stability: Shelf life: one year from despatch.

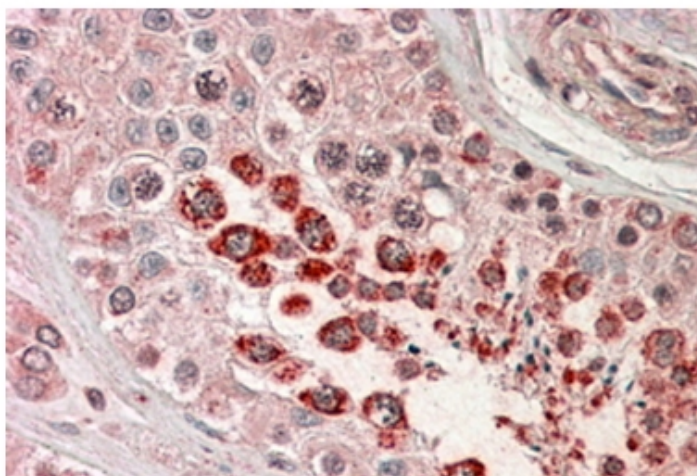
Gene Name: X antigen family member 1E

Database Link: [Entrez Gene 653067 Human Q9HD64](#)

Background: XAGE1 is a member of the XAGE subfamily, which belongs to the GAGE family. The GAGE genes are expressed in a variety of tumors and in some fetal and reproductive tissues. XAGE1 is strongly expressed in Ewing's sarcoma, alveolar rhabdomyosarcoma and normal testis. XAGE1 contains a nuclear localization signal and shares a sequence similarity with other GAGE/PAGE proteins. Because of the expression pattern and the sequence similarity, this protein also belongs to a family of CT (cancer-testis) antigens. Alternative splicing of XAGE1 generates 3 transcript variants, and one of which includes 2 transcripts generated from alternate transcription initiation sites.

Synonyms: GAGED2, XAGE1, XAGE1A, XAGE1B, XAGE1C, XAGE1D, XAGE1E, CT12.1

Product images:



XAGE1 antibody staining of paraffin embedded Human Testis at 3.8 ug/ml. Steamed antigen retrieval with citrate buffer pH 6, AP-staining.