

## Product datasheet for **AP31979PU-N**

### TREX2 Goat Polyclonal Antibody

#### Product data:

Product Type:	Primary Antibodies
Applications:	ELISA, IHC
Recommended Dilution:	<b>Peptide ELISA:</b> 1/128000 (Detection limit). <b>Western blot:</b> Preliminary experiments gave an approx 18kDa band in lysates of Jurkat, MOLT4 and U937 after 0.5 µg/ml antibody staining. Please note that currently we cannot find an explanation in the literature for the band we observe given the calculated size of 25.9kDa according to NP_542432.2. The 18kDa band was successfully blocked by incubation with the immunizing peptide. We would appreciate any feedback from people in the field - have any results been reported with other antibodies/lysates? Have any further splice variants/modified forms been reported? <b>Immunohistochemistry on Paraffin Sections:</b> 3-6 µg/ml. In paraffin embedded Human Breast shows nuclear staining in the luminal epithelial duct cells.
Reactivity:	Human
Host:	Goat
Clonality:	Polyclonal
Immunogen:	Synthetic peptide with sequence from the internal region of Human TREX2 (NP_542432.2).
Specificity:	This antibody recognizes TREX2
Formulation:	Tris saline, pH~7.3 State: Aff - Purified State: Liquid purified Ig fraction Stabilizer: 0.5% BSA Preservative: 0.02% Sodium Azide
Concentration:	lot specific
Purification:	Immunoaffinity Chromatography
Conjugation:	Unconjugated
Storage:	Store the antibody undiluted at 2-8°C for one month or (in aliquots) at -20°C for longer. Avoid repeated freezing and thawing.
Stability:	Shelf life: one year from despatch.
Gene Name:	three prime repair exonuclease 2



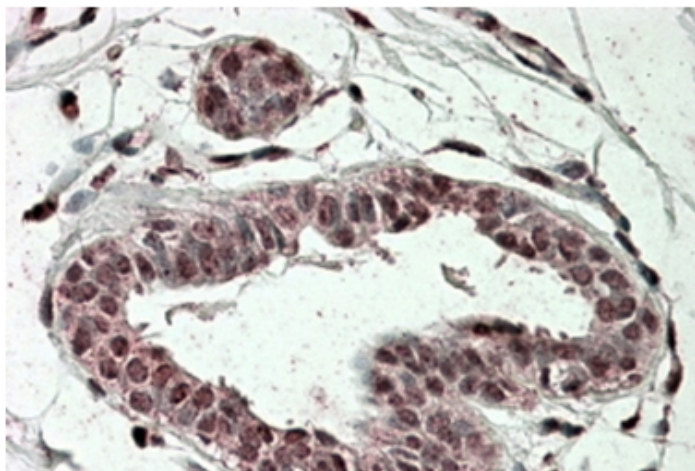
[View online »](#)

Database Link: [Entrez Gene 11219 Human Q9BQ50](#)

**Background:** TREX2 is a protein with 3' exonuclease activity. Enzymes with this activity are involved in DNA replication, repair, and recombination. Similarity to an E. coli protein suggests that this enzyme may be a subunit of DNA polymerase III, which does not have intrinsic exonuclease activity.

**Synonyms:** OTTHUMP00000025920; OTTHUMP00000025922

**Product images:**



TREX2 antibody staining of paraffin embedded Human Breast at 3.8 ug/ml. Steamed antigen retrieval with citrate buffer pH 6, AP-staining.