

Product datasheet for **AP31976PU-N**

GOLGA6B Goat Polyclonal Antibody

Product data:

Product Type:	Primary Antibodies
Applications:	ELISA, IHC
Recommended Dilution:	Peptide ELISA: 1/1000 (Detection limit). Western blot: Preliminary experiments gave an approx 45kDa band in human liver lysates after 1µg/ml antibody staining. Please note that currently we cannot find an explanation in the literature for the band we observe given the calculated size of 79.9kDa according to NP_001033729.1. The 45kDa band was successfully blocked by incubation with the immunizing peptide. We would appreciate any feedback from people in the field - have any results been reported with other antibodies/lysates? Have any further splice variants/modified forms been reported? Immunohistochemistry on Paraffin Sections: 3-6 µg/ml. In paraffin embedded Human Cerebral Cortex shows localized cytoplasm staining consistent with Golgi.
Reactivity:	Human
Host:	Goat
Clonality:	Polyclonal
Immunogen:	Synthetic peptide from the internal region of Human GOLGA6B (NP_061122.4, NP_001033729.1).
Specificity:	This antibody recognizes GOLGA6B
Formulation:	Tris saline, pH~7.3 State: Aff - Purified State: Liquid purified Ig fraction Stabilizer: 0.5% BSA Preservative: 0.02% Sodium Azide
Concentration:	lot specific
Purification:	Immunoaffinity Chromatography
Conjugation:	Unconjugated
Storage:	Store the antibody undiluted at 2-8°C for one month or (in aliquots) at -20°C for longer. Avoid repeated freezing and thawing.
Stability:	Shelf life: one year from despatch.



[View online »](#)

Gene Name: golgin A6 family member B

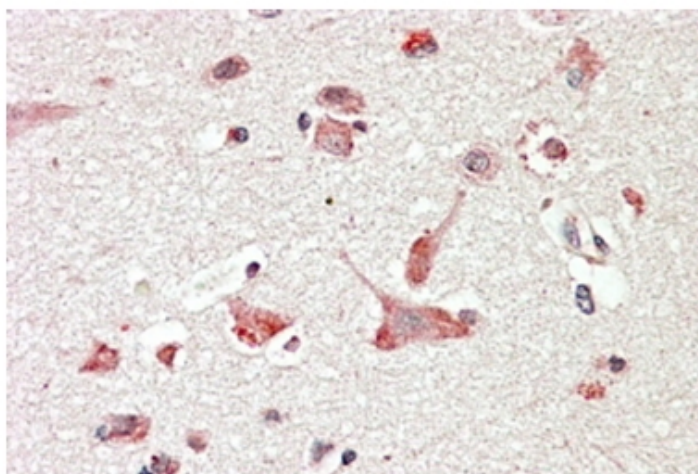
Database Link: [Entrez Gene 55889 Human A6NDN3](#)

Background: This gene is found in a large, low copy repeat sequence or duplicon that is found in multiple copies, which are greater than 90% similar, on chromosome 15. Duplicons are associated with deletions, inversions and other chromosomal rearrangements that underlie genomic disease. This gene is a member of the golgin gene family, whose protein products localize to the Golgi apparatus. The majority of the related gene copies are thought to be transcribed pseudogenes. It is not known whether this gene is a pseudogene or if it encodes a golgin protein. [provided by RefSeq]

Synonyms: Golgin subfamily A member 6B

Note: GeneID 55889 may be a pseudogene, while GeneID 342096 is thought to encode a functional protein.

Product images:



GOLGA6B staining of paraffin embedded Human Cerebral Cortex at 3.8 ug/ml. Steamed antigen retrieval with citrate buffer pH 6, AP-staining.