

Product datasheet for **AP31975PU-N**

VPS11 Goat Polyclonal Antibody

Product data:

Product Type:	Primary Antibodies
Applications:	ELISA, IHC
Recommended Dilution:	Peptide ELISA: 1/32000 (Detection limit). Western blot: Preliminary experiments gave an approx 75kDa band in Human duodenum, colon and placenta lysates after 0.3 µg/ml antibody staining. Please note that currently we cannot find an explanation in the literature for the band we observe given the calculated size of 108kDa according to NP_068375.3. The 75kDa band was successfully blocked by incubation with the immunizing peptide. Immunohistochemistry on Paraffin Sections: 3-6 µg/ml. In paraffin embedded Human Kidney shows brushborder staining in PCT cells and Human Pancreas shows cytoplasm staining of beta cells in islets of Langerhans.
Reactivity:	Bovine, Canine, Human, Mouse, Rat
Host:	Goat
Clonality:	Polyclonal
Immunogen:	Peptide with sequence from the internal region of the protein sequence according to NP_068375.3.
Specificity:	This antibody recognizes RNF108 / VPS11.
Formulation:	Tris saline, pH~7.3 State: Aff - Purified State: Liquid purified Ig fraction Stabilizer: 0.5% BSA Preservative: 0.02% Sodium Azide
Concentration:	lot specific
Purification:	Ammonium Sulphate Precipitation followed by Antigen Affinity Chromatography using the immunizing peptide
Conjugation:	Unconjugated
Storage:	Store undiluted at 2-8°C for one month or (in aliquots) at -20°C for longer. Avoid repeated freezing and thawing.
Stability:	Shelf life: one year from despatch.



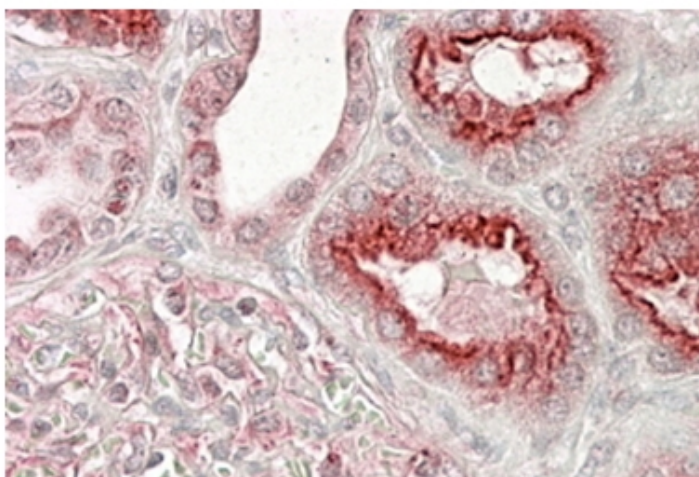
[View online »](#)

Database Link: [Entrez Gene 55823 Human Q9H270](#)

Background: Vesicle mediated protein sorting plays an important role in segregation of intracellular molecules into distinct organelles. Genetic studies in yeast have identified more than 40 vacuolar protein sorting (VPS) genes involved in vesicle transport to vacuoles. This gene encodes the human homolog of yeast class C Vps11 protein. The mammalian class C Vps proteins are predominantly associated with late endosomes/lysosomes, and like their yeast counterparts, may mediate vesicle trafficking steps in the endosome/lysosome pathway.

Synonyms: PP3476

Product images:



VPS11 antibody staining of paraffin embedded Human Kidney at 3.8 ug/ml. Steamed antigen retrieval with citrate buffer pH 6, AP-staining.