

## Product datasheet for **AP31970PU-N**

### FANCE Goat Polyclonal Antibody

#### Product data:

Product Type:	Primary Antibodies
Applications:	ELISA, IHC
Recommended Dilution:	<b>Peptide ELISA:</b> 1/32000 (Detection limit). <b>Western blot:</b> Preliminary experiments gave an approx 70kDa band in Human Adipose and Uterus lysates after 0.1 µg/ml antibody staining. Please note that currently we cannot find an explanation in the literature for the band we observe given the calculated size of 58.7kDa according to NP_068741.1. The 70kDa band was successfully blocked by incubation with the immunizing peptide. <b>Immunohistochemistry on Paraffin Sections:</b> 3-6 µg/ml. In paraffin embedded Human Placenta shows nuclear staining in some trophoblasts.
Reactivity:	Bovine, Human
Host:	Goat
Clonality:	Polyclonal
Immunogen:	Synthetic peptide from an internal region of Human FANCE (NP_068741.1).
Specificity:	This antibody detects FANCE.
Formulation:	Tris saline, pH~7.3 State: Aff - Purified State: Liquid purified Ig fraction Stabilizer: 0.5% BSA Preservative: 0.02% Sodium Azide
Concentration:	lot specific
Purification:	Immunoaffinity Chromatography
Conjugation:	Unconjugated
Storage:	Store the antibody undiluted at 2-8°C for one month or (in aliquots) at -20°C for longer. Avoid repeated freezing and thawing.
Stability:	Shelf life: one year from despatch.
Gene Name:	Fanconi anemia complementation group E



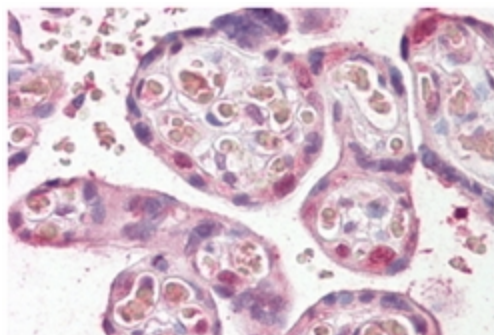
[View online »](#)

Database Link: [Entrez Gene 2178 Human Q9HB96](#)

Background: FANCE promotes the nuclear accumulation of FANCC. FANCE protein is part of the FA nuclear complex, binding FANCC & FANCD2. It is required for the nuclear accumulation of FANCC and provides a bridge between the FA complex and FANCD2. FANCC mutants do not bind FANCE or prevent chromosome breakage.

Synonyms: Fanconi anemia group E protein, FACE

### Product images:



FANCE antibody staining of paraffin embedded Human Placenta at 3.8 ug/ml. Steamed antigen retrieval with citrate buffer pH 6, AP-staining.