

Product datasheet for **AP31967PU-N**

TRIM11 (C-term) Goat Polyclonal Antibody

Product data:

Product Type:	Primary Antibodies
Applications:	ELISA, IHC
Recommended Dilution:	Peptide ELISA: 1/32000 (Detection Limit). Western blot: Preliminary experiments in Human Heart, Kidney, Liver and Lung lysates gave no specific signal but low background (at antibody concentration up to 1 µg/ml). Immunohistochemistry on Paraffin Sections: 4-6 µg/ml. In paraffin embedded Human Kidney shows cytoplasm staining preferentially in PCT over DCT.
Reactivity:	Human
Host:	Goat
Clonality:	Polyclonal
Immunogen:	Peptide with sequence from the C-Terminus of the protein sequence according to NP_660215.1.
Specificity:	This antibody recognizes TRIM11
Formulation:	Tris saline, pH~7.3 State: Aff - Purified State: Liquid purified Ig fraction Stabilizer: 0.5% BSA Preservative: 0.02% Sodium Azide
Concentration:	lot specific
Purification:	Immunoaffinity Chromatography
Conjugation:	Unconjugated
Storage:	Store the antibody undiluted at 2-8°C for one month or (in aliquots) at -20°C for longer. Avoid repeated freezing and thawing.
Stability:	Shelf life: one year from despatch.
Gene Name:	tripartite motif containing 11
Database Link:	Entrez Gene 81559 Human Q96F44

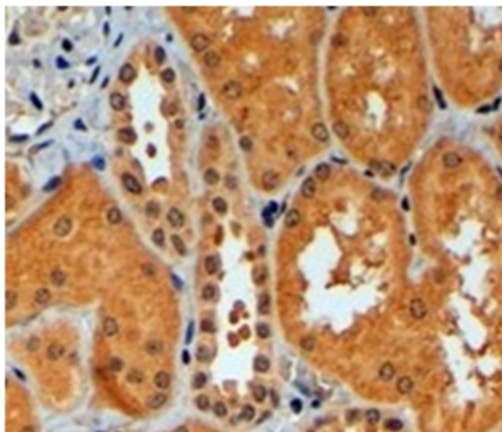


[View online »](#)

Background: The protein encoded by this gene is a member of the tripartite motif (TRIM) family. The TRIM motif includes three zinc-binding domains, a RING, a B-box type 1 and a B-box type 2, and a coiled-coil region. This protein localizes to the nucleus and the cytoplasm. Its function has not been identified. [provided by RefSeq]

Synonyms: BIA1, RING finger protein 92

Product images:



TRIM11 antibody staining of paraffin embedded Human Kidney at 4 ug/ml. Steamed antigen retrieval with citrate buffer pH 6, HRP-staining.