

## Product datasheet for **AP31966PU-N**

### Smgc Goat Polyclonal Antibody

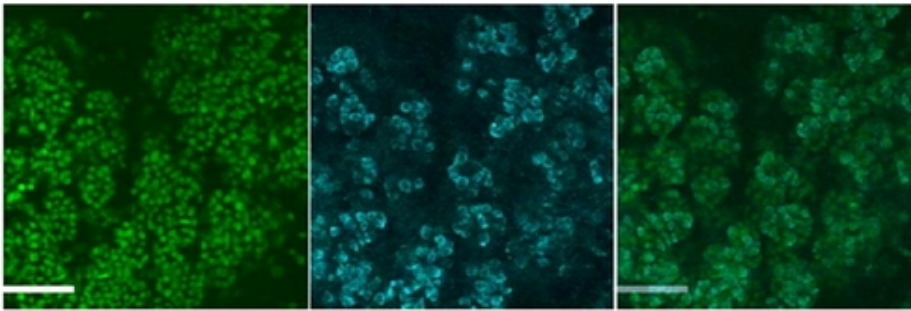
#### Product data:

Product Type:	Primary Antibodies
Applications:	ELISA, IF
Recommended Dilution:	<b>Peptide ELISA:</b> 1/16000 (Detection limit). <b>Western blot:</b> Preliminary experiments gave bands at approx 65kDa and 70kDa in Mouse fetal Lung lysates after 1 µg/ml antibody staining. Please note that currently we cannot find an explanation in the literature for the bands we observe given the calculated size of 74.4kDa according to NP_945121.1. Both detected bands were successfully blocked by incubation with the immunizing peptide (and BLAST results with the immunizing peptide sequence did not identify any other proteins to explain the additional bands). <b>Immunocytochemistry:</b> 4 µg/ml. Positive staining of select epithelial cells in the murine Submandibular gland at E18. <i>Data provided by</i> Melinda Larsen, State University of New York, Albany, NY.
Reactivity:	Mouse
Host:	Goat
Clonality:	Polyclonal
Immunogen:	Synthetic peptide: KLEPKYENPTNGS with a Cysteine residue linker, corresponding to internal sequence amino acids 518-530 of Mouse Muc19 (NP_945121.1).
Specificity:	This antibody recognizes Mouse Muc19 /Smgc. Other species not tested.
Formulation:	Tris saline, pH~7.3 State: Aff - Purified State: Liquid purified Ig fraction Stabilizer: 0.5% BSA Preservative: 0.02% Sodium Azide
Concentration:	lot specific
Purification:	Ammonium Sulphate Precipitation followed by Antigen Affinity Chromatography using the immunizing peptide
Conjugation:	Unconjugated



[View online »](#)

<b>Storage:</b>	Store undiluted at 2-8°C for one month or (in aliquots) at -20°C for longer. Avoid repeated freezing and thawing.
<b>Stability:</b>	Shelf life: one year from despatch.
<b>Gene Name:</b>	submandibular gland protein C
<b>Database Link:</b>	<a href="#">Entrez Gene 223809 Mouse Q6JHY2</a>
<b>Background:</b>	Detected in terminal tubule cells of the submandibular gland (at protein level). Expressed in submandibular salivary glands of 3-day-old males but not adults. Expression in adult submandibular glands is restricted to females. Isoform 5 is expressed in both 3-day-old and adult sublingual glands.
<b>Synonyms:</b>	Submandibular gland protein C, Muc19

**Product images:**

AP31966PU-N (4 g/ml) staining of Mouse SubMandibular Gland cells at E18. Nuclear counterstain with DAPI in green.