

## Product datasheet for **AP31965PU-N**

### **Bpifa2 (146-160) Goat Polyclonal Antibody**

#### **Product data:**

Product Type:	Primary Antibodies
Applications:	ELISA, IF, WB
Recommended Dilution:	<b>Peptide ELISA:</b> 1/128000 (Detection limit). <b>Western Blot:</b> 1-3 µg/ml. Detects a band of Approx 25kDa in Mouse mandibular glands from E17 onwards. Data provided by Melinda Larsen, State University of New York, Albany, NY. <b>Immunocytochemistry:</b> 4 µg/ml. A subset of murine submandibular gland cells (E18) show specific staining in secretory granules. <i>Data provided by Melinda Larsen, State University of New York, Albany, NY.</i>
Reactivity:	Mouse
Host:	Goat
Clonality:	Polyclonal
Immunogen:	Peptide with sequence from the internal region of Mouse PSP (NP_032979.1).
Specificity:	This antibody recognizes Mouse Parotid Secretory Protein (146-160). Other species not tested.
Formulation:	Tris saline, pH~7.3 State: Aff - Purified State: Liquid purified Ig fraction Stabilizer: 0.5% BSA Preservative: 0.02% Sodium Azide
Concentration:	lot specific
Purification:	Ammonium Sulphate Precipitation followed by Antigen Affinity Chromatography using the immunizing peptide
Conjugation:	Unconjugated
Storage:	Store undiluted at 2-8°C for one month or (in aliquots) at -20°C for longer. Avoid repeated freezing and thawing.
Stability:	Shelf life: one year from despatch.
Predicted Protein Size:	24.8 kDa (NP_032979.1).
Gene Name:	BPI fold containing family A, member 2



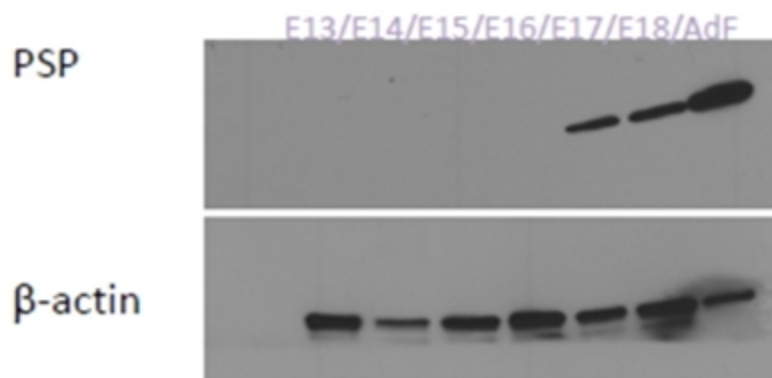
[View online »](#)

**Database Link:** [Entrez Gene 19194 Mouse P07743](#)

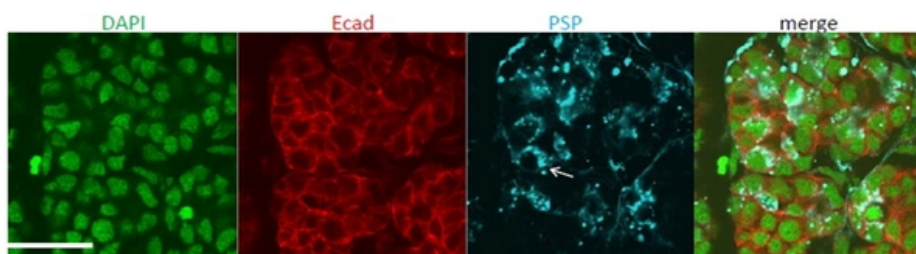
**Background:** Predominates in the parotid glands, present in smaller amounts (1/10) in the submaxillary glands and in the sublingual glands, and at lower amount in the pancreas but undetectable in the liver. Found also in lacrimal gland. Expressed at low levels at day 3 after birth but increased gradually with age from this time.

**Synonyms:** BPIA2, Parotid secretory protein

**Product images:**



PSP antibody (1 ug/ml) staining of Mouse Mandibular Gland cell lysates (35ug protein in RIPA buffer). Primary incubation was 1 hour. Detected by chemiluminescence (Super Signal).



PSP antibody; (4 ug/ml) staining of Mouse Submandibular gland cells (in blue). Counter staining of Ecad in red and nuclear staining in green.