

## Product datasheet for **AP31964PU-N**

### Muc19 Goat Polyclonal Antibody

#### Product data:

Product Type:	Primary Antibodies
Applications:	PEP-ELISA, WB
Recommended Dilution:	<b>Peptide ELISA:</b> 1/128000 (Detection limit). <b>Western blot:</b> Not yet tested - our routinely used Western blotting protocol does not allow detection of proteins as large as the calculated size of 694kDa according to NP_997126.2. Therefore we cannot recommend an optimal concentration and the antibody is an aspiring product. <b>Immunohistochemistry:</b> Positive staining in the sublingual salivary gland of the mouse, while cells remain negative in the submandibular salivary gland. <i>Data provided by Melinda Larsen, State University of New York, Albany, NY.</i>
Reactivity:	Mouse, Rat
Host:	Goat
Clonality:	Polyclonal
Immunogen:	Synthetic peptide: ECKRSVKYNYETFQ, corresponding to C-terminal amino acids 7461-7474 of Mouse Muc19 (NP_997126.2).
Specificity:	This antibody recognizes Mucin-19
Formulation:	Tris saline, pH~7.3 State: Aff - Purified State: Liquid purified Ig fraction Stabilizer: 0.5% BSA Preservative: 0.02% Sodium Azide
Concentration:	lot specific
Purification:	Affinity Chromatography
Conjugation:	Unconjugated
Storage:	Store the antibody undiluted at 2-8°C for one month or (in aliquots) at -20°C for longer. Avoid repeated freezing and thawing.
Stability:	Shelf life: one year from despatch.
Gene Name:	mucin 19



[View online »](#)

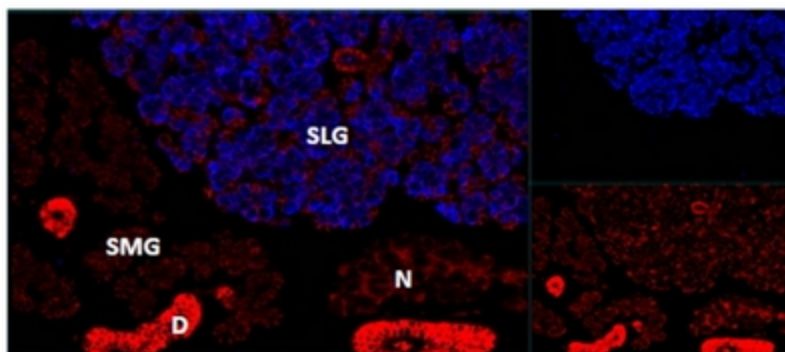
Database Link: [Entrez Gene 239611 Mouse](#)  
[Q6PZE0](#)

**Background:** **Function:** May function in ocular mucus homeostasis.  
**Tissue specificity:** Specifically expressed in sublingual salivary glands. Expressed by mucous cells of the submandibular gland and submucosal gland of the trachea. Expression is altered in sld (sublingual gland differentiation arrest) mutants.  
**Sequence similarities:** Contains 1 CTCK (C-terminal cystine knot-like) domain, 1 TIL (trypsin inhibitory-like) domain, 2 VWFC domains, 3 VWFD domains.

**Synonyms:** Apomucin, Muc19, Muc-19

### Product images:

MUC19 Na/K-ATPase



Mucin-19 antibody (1.8 ug/ml) staining cells of the sublingual salivary gland (SLG) in Mouse, but not any cells of the submandibular salivary gland (SMG).