

Product datasheet for **AP31958PU-N**

CCNDBP1 (322-333) Goat Polyclonal Antibody

Product data:

Product Type:	Primary Antibodies
Applications:	ELISA, WB
Recommended Dilution:	Peptide ELISA: 1/4000 (Detection limit). Western blot: 0.3-1 µg/ml. Detects a band of Approx 40kDa in Human Placenta lysates.
Reactivity:	Bovine, Canine, Human, Porcine
Host:	Goat
Clonality:	Polyclonal
Immunogen:	Synthetic peptide (C-TKASHVTPQPED) from the internal region (near C-Terminus) of Human CCNDBP1 (NP_036274.3).
Specificity:	This antibody recognizes CCNDBP1.
Formulation:	Tris saline, pH~7.3 State: Aff - Purified State: Liquid purified Ig fraction Stabilizer: 0.5% BSA Preservative: 0.02% Sodium Azide
Concentration:	lot specific
Purification:	Affinity Chromatography
Conjugation:	Unconjugated
Storage:	Store the antibody undiluted at 2-8°C for one month or (in aliquots) at -20°C for longer. Avoid repeated freezing and thawing.
Stability:	Shelf life: one year from despatch.
Predicted Protein Size:	40.3 kDa (NP_036274.3)
Gene Name:	cyclin D1 binding protein 1
Database Link:	Entrez Gene 23582 Human O95273



[View online »](#)

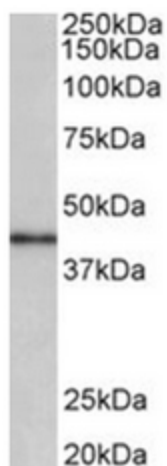
Background:

May negatively regulate cell cycle progression. May act at least in part via inhibition of the cyclin-D1/CDK4 complex, thereby preventing phosphorylation of RB1 and blocking E2F-dependent transcription.

Ubiquitously expressed. Expression is down-regulated in a variety of tumor types including breast, colon, prostate and rectal tumors, and is up-regulated in certain hepatic carcinomas.

Synonyms:

DIP1, GCIP, HHM, MAID

Product images:

CCNDBP1 antibody staining of Human Placenta lysate at 0.3 ug/ml (35ug protein in RIPA buffer). Primary incubation was 1 hour. Detected by chemiluminescence.