

## Product datasheet for **AP31953PU-N**

### SETDB2 / CLLD8 Goat Polyclonal Antibody

#### Product data:

Product Type:	Primary Antibodies
Applications:	ELISA, WB
Recommended Dilution:	<b>Peptide ELISA:</b> 1/32000 (Detection limit). <b>Western blot:</b> 0.1-0.3 µg/ml. Detects a band of Approx 90kDa in Human Heart lysates.
Reactivity:	Bovine, Canine, Human, Mouse, Porcine
Host:	Goat
Clonality:	Polyclonal
Immunogen:	Synthetic Peptide (C-QRRHAKTNSHSSALH) from the C- or N- Terminus of the protein sequence according to NP_114121.2; NP_001153780.1.
Specificity:	This antibody is expected to recognize both reported isoforms (NP_114121.2 and NP_001153780.1).
Formulation:	Tris saline, pH~7.3 State: Aff - Purified State: Liquid purified Ig fraction Stabilizer: 0.5% BSA Preservative: 0.02% Sodium Azide
Concentration:	lot specific
Purification:	Affinity Chromatography
Conjugation:	Unconjugated
Storage:	Store the antibody undiluted at 2-8°C for one month or (in aliquots) at -20°C for longer. Avoid repeated freezing and thawing.
Stability:	Shelf life: one year from despatch.
Predicted Protein Size:	81.9 kDa (NP_114121.2).
Gene Name:	SET domain bifurcated 2
Database Link:	<a href="#">Entrez Gene 83852 Human Q96T68</a>

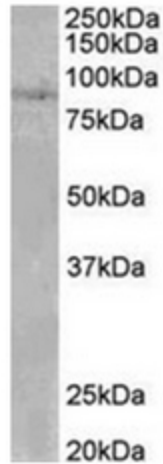


[View online »](#)

**Background:** Proteins that contain a SET domain, such as SETDB2, modulate gene expression epigenetically through histone H3 methylation. SETDB2 is likely a histone H3 methyltransferase, as it contains both the active site and flanking cysteine residues required for catalytic activity.

**Synonyms:** C13orf4, KMT1F

**Product images:**



AP31953PU-N SETDB2 antibody staining of Human Heart lysate at 0.1 g/ml (35g protein in RIPA buffer). Primary incubation was 1 hour. Detected by chemiluminescence.