

Product datasheet for **AP31950PU-N**

Dopamine beta Hydroxylase (DBH) (437-448) Goat Polyclonal Antibody

Product data:

Product Type:	Primary Antibodies
Applications:	ELISA, WB
Recommended Dilution:	Peptide ELISA: 1/128000 (Detection limit). Western blot: 1-3 µg/ml. Detects band of Approx 70kDa in lysates of cell line Jurkat. Primary incubation was 1 hour. Preliminary testing was unsuccessful on Mouse and Rat Brain for this particular batch. Immunohistochemistry on Paraffin Sections: 5 µg/ml in Paraffin embedded Human Adrenal Gland.
Reactivity:	Bovine, Human, Mouse, Porcine, Rat
Host:	Goat
Clonality:	Polyclonal
Immunogen:	Synthetic peptide (-DNHYSPPHFQEIR) from the internal region of Human DBH (NP_000778.3).
Specificity:	This antibody recognizes DBH (437-448). This batch is not expected to cross-react with Mouse and Rat in Western blot.
Formulation:	Tris saline, pH~7.3 State: Aff - Purified State: Liquid purified Ig fraction Stabilizer: 0.5% BSA Preservative: 0.02% Sodium Azide
Concentration:	lot specific
Purification:	Affinity Chromatography
Conjugation:	Unconjugated
Storage:	Store undiluted at 2-8°C for one month or (in aliquots) at -20°C for longer. Avoid repeated freezing and thawing.
Stability:	Shelf life: one year from despatch.
Gene Name:	dopamine beta-hydroxylase
Database Link:	Entrez Gene 1621 Human P09172



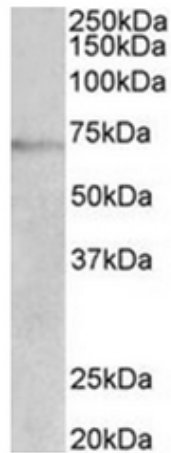
[View online »](#)

Background:

DBH is a member of the copper type II, ascorbate-dependent monooxygenase family, which catalyzes the conversion of dopamine to norepinephrine, a key neurotransmitter in the central and peripheral nervous systems. The effects of DBH plasma levels have been a focus area for both neurological and psychiatric disorders, including Parkinsons disease, hypertension, depression, schizophrenia, drug abuse and stress.

Synonyms:

DBH, Dopamine beta-monoxygenase, DBM, DOPO

Product images:

DBH antibody staining of Jurkat lysate at 2 ug/ml (35ug protein in RIPA buffer). Primary incubation was 1 hour. Detected by chemiluminescence.