

## Product datasheet for **AP31948PU-N**

### **PDE4 (PDE4B) (C-term) Goat Polyclonal Antibody**

#### **Product data:**

Product Type:	Primary Antibodies
Applications:	ELISA, WB
Recommended Dilution:	<b>Peptide ELISA:</b> 1/32000 (Detection limit). <b>Western blot:</b> 1-3 µg/ml. Approx 98kDa band observed in Human Uterus lysates. The observed molecular weight corresponds to earlier findings in literature with different antibodies (Méhats et al, Endocrinology. 1999 Jul;140(7):3228-37. PMID: 10385419).
Reactivity:	Human, Mouse
Host:	Goat
Clonality:	Polyclonal
Immunogen:	synthetic peptide (C-IDIATEDKSPVDT) from the C Terminus of the protein sequence according to NP_002591.2; NP_001032416.1; NP_001032417.1.
Specificity:	This antibody is expected to recognize all reported isoforms (NP_002591.2, NP_001032416.1, NP_001032417.1).
Formulation:	Tris saline, pH~7.3 State: Aff - Purified State: Liquid purified Ig fraction Stabilizer: 0.5% BSA Preservative: 0.02% Sodium Azide
Concentration:	lot specific
Purification:	Affinity Chromatography
Conjugation:	Unconjugated
Storage:	Store the antibody undiluted at 2-8°C for one month or (in aliquots) at -20°C for longer. Avoid repeated freezing and thawing.
Stability:	Shelf life: one year from despatch.
Predicted Protein Size:	83.3 kDa (NP_002591.2).
Gene Name:	phosphodiesterase 4B



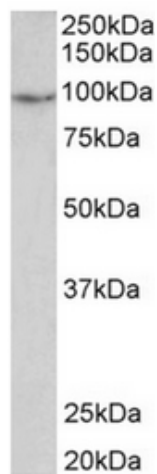
[View online »](#)

**Database Link:** [Entrez Gene 5142 Human Q07343](#)

**Background:** Cyclic nucleotide phosphodiesterases (PDEs) catalyse the hydrolytic inactivation of the common intracellular second messengers cyclic adenosine and guanosine 3', 5'-monophosphate (cAMP and cGMP). Thus, these enzymes play a critical role in the regulation of a wide range of physiological processes modulated by cyclic nucleotide signalling. The PDE4 enzyme belongs to a family of cAMP-dependent PDEs that provide the major means of inactivating the key intracellular second messenger, cAMP. Four genes (4A, 4B, 4C, and 4D) encode around 20 distinct isoform members of the PDE4 family. Each isoform is characterized by a unique N-terminal region.

**Synonyms:** PDE4B, DPDE4, cAMP-specific 3',5'-cyclic phosphodiesterase 4B, EC=3.1.4.17, PDE32

**Product images:**



PDE4B antibody staining of Human Uterus lysate at 2 ug/ml (35ug protein in RIPA buffer). Primary incubation was 1 hour. Detected by chemiluminescence.