

## Product datasheet for **AP31946PU-N**

### Prealbumin / Transthyretin Goat Polyclonal Antibody

#### Product data:

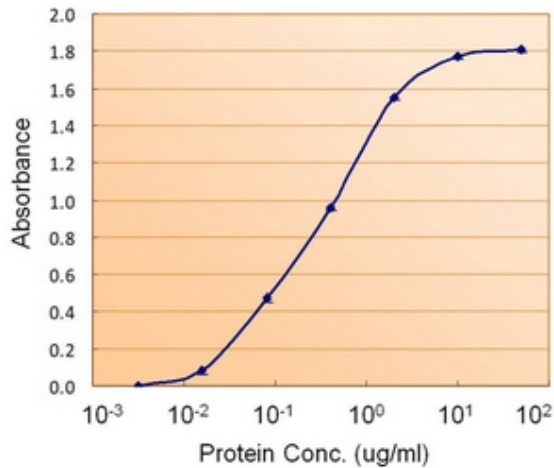
Product Type:	Primary Antibodies
Applications:	ELISA, IHC
Recommended Dilution:	<b>Peptide ELISA:</b> 1/1000 (Detection limit). <b>Enzyme Immunoassay:</b> 5-10 µg/ml. Sandwich-type ELISA with increasing amount of recombinant TTR captured by a Rabbit antibody. <b>Immunohistochemistry on Paraffin Sections:</b> 10 µg/ml. <i>Positive Control:</i> Human Pancreas.
Reactivity:	Canine, Human, Mouse, Rat
Host:	Goat
Clonality:	Polyclonal
Immunogen:	Synthetic peptide (C-YKVEIDTKSYWK) from the internal region of the protein sequence according to Human Prealbumin (NP_000362.1).
Specificity:	This antibody recognizes Prealbumin / Transthyretin.
Formulation:	Tris saline, pH~7.3 State: Aff - Purified State: Liquid purified Ig fraction Stabilizer: 0.5% BSA Preservative: 0.02% Sodium Azide
Concentration:	lot specific
Purification:	Affinity Chromatography
Conjugation:	Unconjugated
Storage:	Store undiluted at 2-8°C for one month or (in aliquots) at -20°C for longer. Avoid repeated freezing and thawing.
Stability:	Shelf life: one year from despatch.
Background:	Prealbumin is a serum protein usually occurring at 200-400mg/L serum. Prealbumin migrates faster than albumin in acidic starch gels and include alpha 1 antitrypsin, thyroxine binding prealbumin, and orosomucoid, an alpha 1 acid glycoprotein. The functions of prealbumin are to transport thyroxine, a task it shares with thyroxine binding globulin, retinol binding protein and vitamin A. Polymorphism of prealbumin is known in the mouse and pig.



[View online »](#)

**Note:** **Western Blot:** Preliminary experiments gave an approx 20-22kDa band in Human Heart, Kidney, Liver, Lung, Placenta and Testis lysates after 1 µg/ml antibody staining. Please note that currently we cannot find an explanation in the literature for the band we observe given the calculated size of 15.9kDa according to NP\_000362.1. The 20-22kDa band was successfully blocked by incubation with the immunizing peptide. We would appreciate any feedback from people in the field - have any results been reported with other antibodies/lysates? Have any further splice variants/modified forms been reported?

### Product images:



AP31946PU-N Prealbumin antibody (5 g/ml) as the reporter with a capture Rabbit antibody (5 g/ml).