

Product datasheet for **AP31939PU-N**

Gelsolin (GSN) (Isoform a) Goat Polyclonal Antibody

Product data:

Product Type:	Primary Antibodies
Applications:	ELISA, WB
Recommended Dilution:	Peptide ELISA: 1/64000 (Detection limit). Western Blot: 1-3 µg/ml. Detects a band of Approx 100kDa in Human Colon, Duodenum, Heart and Skeletal Muscle lysates.
Reactivity:	Human
Host:	Goat
Clonality:	Polyclonal
Immunogen:	Synthetic Peptide (PQGRVPEARPNS-C) from the N-Terminus of the protein sequence according to NP_000168.1; NP_937895.1; NP_001121138.1.
Specificity:	This antibody is expected to recognize Isoform a (NP_000168.1) only.
Formulation:	Tris saline, pH~7.3 State: Aff - Purified State: Liquid purified Ig fraction Stabilizer: 0.5% BSA Preservative: 0.02% Sodium Azide
Concentration:	lot specific
Purification:	Affinity Chromatography
Conjugation:	Unconjugated
Storage:	Store the antibody undiluted at 2-8°C for one month or (in aliquots) at -20°C for longer. Avoid repeated freezing and thawing.
Stability:	Shelf life: one year from despatch.
Predicted Protein Size:	85.7 kDa (NP_000168.1).
Gene Name:	gelsolin
Database Link:	Entrez Gene 2934 Human P06396



[View online »](#)

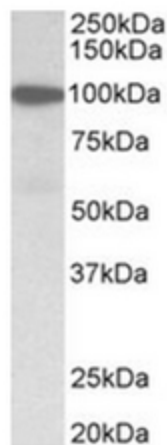
Background:

Calcium-regulated, actin-modulating protein that binds to the plus (or barbed) ends of actin monomers or filaments, preventing monomer exchange (end-blocking or capping). It can promote the assembly of monomers into filaments (nucleation) as well as sever filaments already formed. Plays a role in ciliogenesis.

Phagocytic cells, platelets, fibroblasts, nonmuscle cells, smooth and skeletal muscle cells. Defects in GSN are the cause of amyloidosis type 5 (AMYL5) [MIM:105120]; also known as familial amyloidosis Finnish type. AMYL5 is a hereditary generalized amyloidosis due to gelsolin amyloid deposition. It is typically characterized by cranial neuropathy and lattice corneal dystrophy. Most patients have modest involvement of internal organs, but severe systemic disease can develop in some individuals causing peripheral polyneuropathy, amyloid cardiomyopathy, and nephrotic syndrome leading to renal failure.

Synonyms:

Brevin, AGEL, GSN

Product images:

Gelsolin antibody staining of Human Duodenum lysate at 1 ug/ml (35ug protein in RIPA buffer). Primary incubation was 1 hour. Detected by chemiluminescence.