

Product datasheet for **AP31922PU-N**

E2 230K (UBE2O) (C-term) Goat Polyclonal Antibody

Product data:

Product Type:	Primary Antibodies
Applications:	ELISA, IHC
Recommended Dilution:	ELISA: 1/32000 (Detection Limit). Western blot: Preliminary experiments in Human Colon lysates and in lysates of cell line HeLa gave no specific signal but low background (at antibody concentration up to 1 µg/ml). We would appreciate any feedback from people in the field - have any results been reported with other antibodies/lysates? Immunohistochemistry on Paraffin Sections: 4-6 µg/ml. In paraffin embedded Human Heart shows textured staining in some myocardial fibres.
Reactivity:	Bovine, Canine, Human, Mouse, Porcine, Rat
Host:	Goat
Clonality:	Polyclonal
Immunogen:	UBE2O antibody was raised against synthetic peptide (ALLEAGMPECTEDK) from C-terminus of Human UBE2O (NP_071349.3)
Specificity:	Recognizes UBE2O (C-term).
Formulation:	Tris saline, pH~7.3 State: Aff - Purified State: Liquid purified Ig fraction Stabilizer: 0.5% BSA Preservative: 0.02% Sodium Azide
Concentration:	lot specific
Purification:	Ammonium Sulphate Precipitation followed by Antigen Affinity Chromatography using the immunizing peptide
Conjugation:	Unconjugated
Storage:	Store undiluted at 2-8°C for one month or (in aliquots) at -20°C for longer. Avoid repeated freezing and thawing.
Stability:	Shelf life: one year from despatch.
Gene Name:	ubiquitin conjugating enzyme E2 O

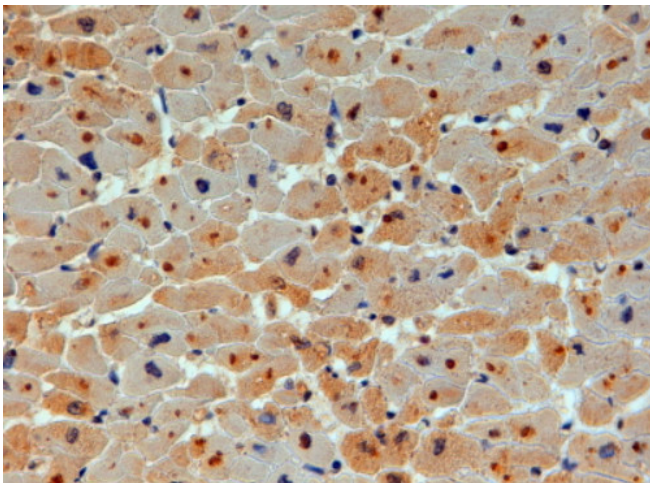


[View online »](#)

Database Link: [Entrez Gene 63893 Human](#)
[Q9C0C9](#)

Synonyms: Ubiquitin-conjugating enzyme E2 O, Ubiquitin-protein ligase O, Ubiquitin carrier protein O, E2-230K, KIAA1734

Product images:



Formalin-Fixed, Paraffin-Embedded Human Heart stained with UBE2O antibody at 4 ug/ml. Steamed antigen retrieval with citrate buffer pH 6, HRP-staining.