

Product datasheet for **AP31902PU-N**

Cdk20 Rabbit Polyclonal Antibody

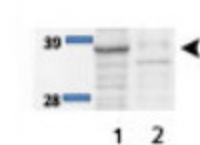
Product data:

Product Type:	Primary Antibodies
Applications:	ELISA, IHC, WB
Recommended Dilution:	ELISA. Western Blot: 1/200-1/5000. Immunohistochemistry: 1/100-1/2000.
Reactivity:	Mouse, Rat
Host:	Rabbit
Clonality:	Polyclonal
Immunogen:	Synthetic peptide derived from internal part of Mouse Cdk20 protein.
Specificity:	This antibody reacts with Cdk20 protein.
Formulation:	0.1M Tris, 0.1M Glycine, 2% Sucrose State: Purified State: Lyophilized powder Preservative: None
Reconstitution Method:	Restore in distilled water
Concentration:	lot specific
Purification:	Protein A Chromatography
Conjugation:	Unconjugated
Storage:	Store lyophilized at 2-8°C for 6 months or at -20°C long term. After reconstitution store the antibody undiluted at 2-8°C for one month or (in aliquots) at -20°C long term. Avoid repeated freezing and thawing.
Stability:	Shelf life: one year from despatch.
Gene Name:	cyclin-dependent kinase 20
Database Link:	Entrez Gene 105278 Mouse Q9JHU3
Synonyms:	CAK-kinase p42



[View online »](#)

Product images:



Anti-Cdk20 antibody Western Blot staining of 1 soluble and 2 insoluble fraction of cell lysate.