

Product datasheet for **AP31882PU-N**

GPR101 (C-term) Rabbit Polyclonal Antibody

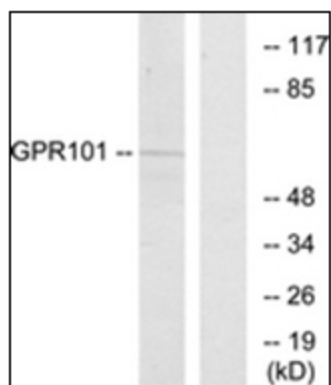
Product data:

Product Type:	Primary Antibodies
Applications:	ELISA, IF, IHC, WB
Recommended Dilution:	ELISA: 1/1000. Immunofluorescence: 1/100 - 1/500. Immunohistochemistry on Paraffin Sections: 1/100. Western Blot: 1/500 - 1/1000.
Reactivity:	Human, Mouse
Host:	Rabbit
Isotype:	IgG
Clonality:	Polyclonal
Immunogen:	Synthetic peptide from Human GPR101. Epitope: C-Terminus
Specificity:	This antibody detects endogenous levels of total GPR101 protein.
Formulation:	PBS (without Mg ²⁺ , Ca ²⁺), pH 7.4, 150 mM Sodium Chloride, 50% Glycerol State: Aff - Purified State: Liquid purified IgG fraction Preservative: 0.02% Sodium Azide
Concentration:	lot specific
Purification:	Immunoaffinity Chromatography
Conjugation:	Unconjugated
Storage:	Store the antibody undiluted at 2-8°C for one month or (in aliquots) at -20°C for longer. Avoid repeated freezing and thawing.
Stability:	Shelf life: one year from despatch.
Gene Name:	G protein-coupled receptor 101
Database Link:	Entrez Gene 83550 Human Q96P66
Synonyms:	G-protein coupled receptor 101

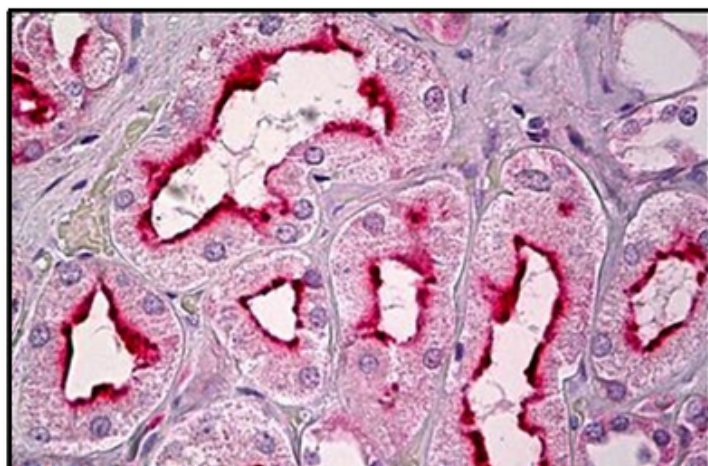


[View online »](#)

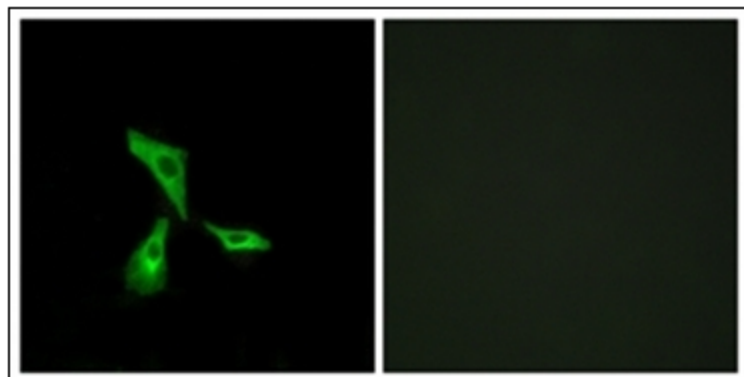
Product images:



Western blot analysis of extracts from COS7 cells, using GPR101 Antibody. The lane on the right is treated with the synthesized peptide.



Human Kidney, Tubules: Formalin-Fixed, Paraffin-Embedded (FFPE)



Immunofluorescence analysis of HeLa cells, using GPR101 Antibody. The picture on the right is treated with the synthesized peptide.