

Product datasheet for **AP31877PU-N**

Cadherin like 23 (CDH23) (61-110) Rabbit Polyclonal Antibody

Product data:

Product Type:	Primary Antibodies
Applications:	ELISA, IF, IHC
Recommended Dilution:	ELISA: 1/10000. Immunofluorescence: 1/100 - 1/500. Immunohistochemistry on Paraffin Sections.
Reactivity:	Human, Mouse, Rat
Host:	Rabbit
Isotype:	IgG
Clonality:	Polyclonal
Immunogen:	CDH23 / Cadherin 23 antibody was raised against synthetic peptide from human CDH23 (aa61-110). Epitope: aa61-110.
Specificity:	This antibody detects endogenous levels of total CDH23 protein.
Formulation:	PBS (without Mg ²⁺ , Ca ²⁺), pH 7.4, 150 mM Sodium Chloride, 50% Glycerol State: Aff - Purified State: Liquid purified IgG fraction Preservative: 0.02% Sodium Azide
Purification:	Immunoaffinity Chromatography
Conjugation:	Unconjugated
Storage:	Store the antibody undiluted at 2-8°C for one month or (in aliquots) at -20°C for longer. Avoid repeated freezing and thawing.
Stability:	Shelf life: one year from despatch.
Gene Name:	cadherin-related 23
Database Link:	Entrez Gene 64072 Human Q9H251



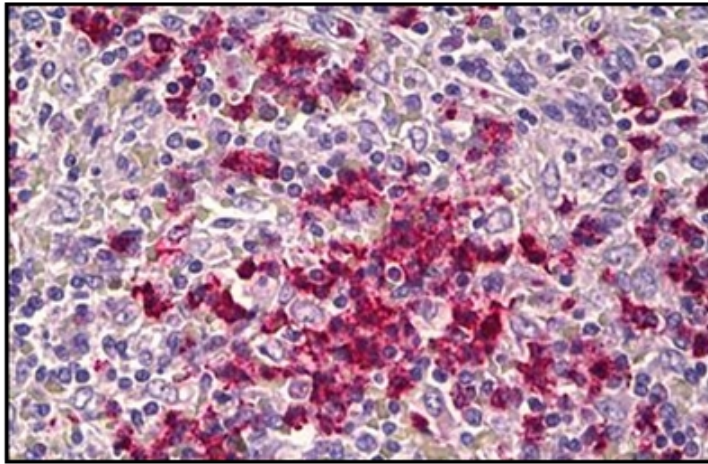
[View online »](#)

Background:

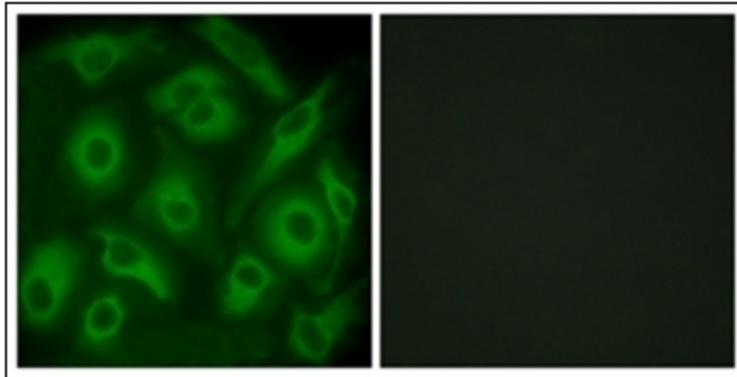
Cadherin like 23 (or Cadherin 23) is, like other members of the cadherin family, a calcium-dependent cell adhesion glycoprotein that preferentially interacts with itself in connecting cells. It is a single pass type I membrane protein that contains 27 cadherin domains. Cadherin like 23 is expressed in the neurosensory epithelium, where it is thought to be involved in stereocilia organisation and hair bundle formation. Defects in the gene encoding Cadherin like 23 are a cause of Usher syndrome, which is characterised by profound congenital sensorineural deafness and eventual blindness. Mutations in this gene are also a cause of non-syndromic sensorineural deafness autosomal recessive type 12 (DFNB12). Cadherin like 23 has also been associated with age-related hearing loss.

Synonyms:

CDH23, KIAA1774, KIAA1812

Product images:

Human Spleen: Formalin-Fixed, Paraffin-Embedded (FFPE)



Immunofluorescence analysis of HeLa cells, using CDH23 Antibody. The picture on the right is treated with the synthesized peptide.