

Product datasheet for **AP31872PU-N**

GPR91 (SUCNR1) Rabbit Polyclonal Antibody

Product data:

Product Type:	Primary Antibodies
Applications:	ELISA, IHC, WB
Recommended Dilution:	ELISA: 1/10000. Immunohistochemistry on Paraffin Sections: 1/200. Western Blot: 1/500 - 1/1000.
Reactivity:	Human, Mouse, Rat
Host:	Rabbit
Isotype:	IgG
Clonality:	Polyclonal
Immunogen:	Synthetic peptide from Human SUCNR1. Epitope: Internal (aa 100-149).
Specificity:	This antibody detects endogenous levels of total SUCNR1 protein.
Formulation:	PBS (without Mg ²⁺ , Ca ²⁺), pH 7.4, 150 mM Sodium Chloride, 50% Glycerol State: Aff - Purified State: Liquid purified IgG fraction Preservative: 0.02% Sodium Azide
Concentration:	lot specific
Purification:	Immunogen Affinity Chromatography
Conjugation:	Unconjugated
Storage:	Store the antibody undiluted at 2-8°C for one month or (in aliquots) at -20°C for longer. Avoid repeated freezing and thawing.
Stability:	Shelf life: one year from despatch.
Gene Name:	succinate receptor 1
Database Link:	Entrez Gene 56670 Human Q9BXA5



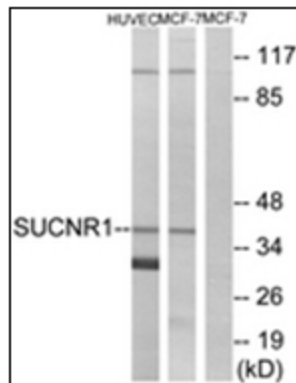
[View online »](#)

Background:

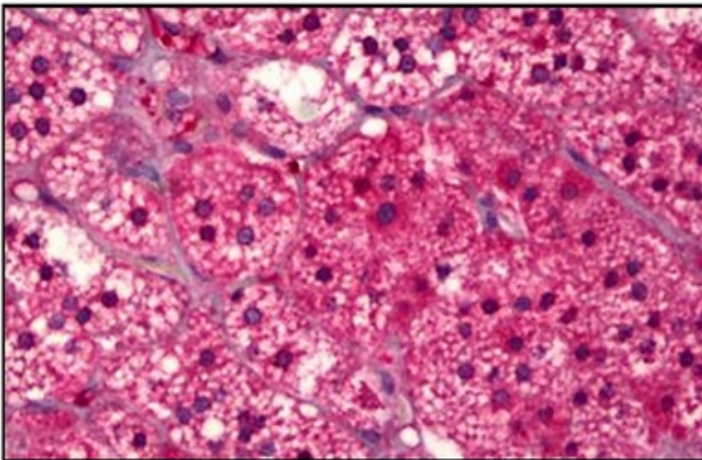
GPR91 (formerly known as P2U2) is a G protein-coupled, dicarboxylic acid succinate receptor. It has a high level of expression in the kidney, predominantly in the proximal tubules, and localizes to the plasma membrane. It has also been found at low levels in the liver and the spleen. GPR91 functions as a citric acid cycle intermediate succinate receptor. Two signaling pathways result from GPR91 activation, the pertussis-toxin-sensitive Gi/Go pathway and the pertussis-toxin-insensitive Gq pathway. Four amino acid residues are necessary for GPR91 activation by succinate: Arg 99, His 103, Arg 252 and Arg 281. GPR91 plays an important role in the succinate-induced hypertensive effect and may be involved in renovascular hypertension, a disease linked to diabetes, renal failure and atherosclerosis.

Synonyms:

G-protein coupled receptor 91, P2Y purinoceptor 1-like

Product images:

Western blot analysis of extracts from HuvEc/MCF-7 cells, using SUCNR1 Antibody. The lane on the right is treated with the synthesized peptide.



Human Adrenal Cortex: Formalin-Fixed, Paraffin-Embedded (FFPE)