

Product datasheet for **AP31853PU-N**

Serotonin transporter (SLC6A4) (605-618) Goat Polyclonal Antibody

Product data:

Product Type:	Primary Antibodies
Applications:	ELISA, FC, IF, WB
Recommended Dilution:	Peptide ELISA: 1/32000 (Detection Limit). Western blot: 1-3 µg/ml. Approx 75kDa band observed in Mouse, Small Intestine lysates. Immunofluorescence: Strong expression of the protein seen in the Golgi apparatus/vesicles of HepG2 cells. Recommended concentration: 10µg/ml. Flow Cytometry: Flow cytometric analysis of Jurkat cells. Recommended concentration: 10ug/ml.
Reactivity:	Bovine, Human, Mouse, Rat
Host:	Goat
Clonality:	Polyclonal
Immunogen:	Peptide with sequence, from the C-Terminus of the protein sequence according to NP_001036.1.
Specificity:	This antibody recognizes SLC6A4 (605-618).
Formulation:	Tris buffered saline, pH~7.3 containing 0.02% Sodium Azide as preservative and 0.5% BSA as stabilizer State: Aff - Purified State: Liquid purified Ig fraction
Concentration:	lot specific
Purification:	Ammonium Sulphate Precipitation followed by antigen Affinity Chromatography using the immunizing peptide
Conjugation:	Unconjugated
Storage:	Store the antibody undiluted at 2-8°C for one month or (in aliquots) at -20°C for longer. Avoid repeated freezing and thawing.
Stability:	Shelf life: one year from despatch.
Gene Name:	solute carrier family 6 member 4
Database Link:	Entrez Gene 6532 Human P31645



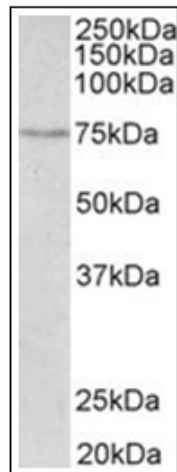
[View online »](#)

Background: SERT is a high affinity Na⁺, Cl⁻ dependent transporter that clears serotonin from synaptic spaces to presynaptic neurons. It has been observed to migrate as 76kDa from rat brain, due to posttranslational modifications other bands are observed from different tissues.

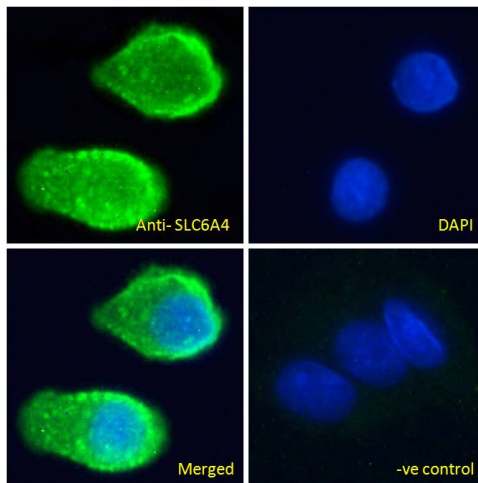
Synonyms: 5HT transporter, 5HTT, HTT, Sodium-dependent serotonin transporter

Note: Calculated Molecular Weight: 70.3kDa (Human NP_001036.1) and 70.0kDa (Mouse NP_034614.2).

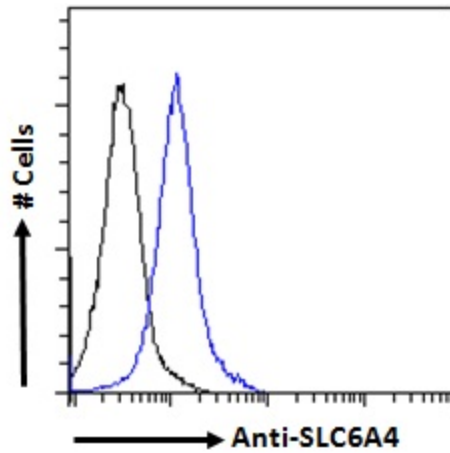
Product images:



Staining of Mouse Small Intestine lysate (35ug protein in RIPA buffer) using SLC6A4 Antibody at 0.5 ug/ml. Primary incubation was 1 hour. Detected by chemiluminescence.



Immunofluorescence analysis of paraformaldehyde fixed Heug2 cells, permeabilized with 0.15% Triton. Primary incubation 1hr (10ug/ml) followed by Alexa Fluor 488 secondary antibody (2ug/ml), showing cytoplasmic apparatus/vesicle staining. The nuclear stain is DAPI (blue). Negative control: Unimmunized goat IgG (10ug/ml) followed by Alexa Fluor 488 secondary antibody (4ug/ml).



Flow cytometric analysis of paraformaldehyde fixed Jurkat cells (blue line), permeabilized with 0.5% Triton. Primary incubation 1hr (10ug/ml) followed by Alexa Fluor 488 secondary antibody (2ug/ml). IgG control: Unimmunized goat IgG (2ug/ml) followed by Alexa Fluor 488 secondary antibody.