

Product datasheet for **AP31850PU-N**

Clu (312-325) Goat Polyclonal Antibody

Product data:

Product Type:	Primary Antibodies
Applications:	ELISA, WB
Recommended Dilution:	Peptide ELISA: 1/8000 (Detection Limit). Western blot: 0.1-0.3 µg/ml. Approx 37kDa band observed in Mouse Testis lysates (calculated MW of 51.7kDa according to NP_038520.1). The observed molecular weight corresponds to earlier findings in literature with different antibodies (Miyata et al, Circulation. 2001 Sep 18;104(12):1407-12.; PMID: 11560857).
Reactivity:	Mouse, Rat
Host:	Goat
Clonality:	Polyclonal
Immunogen:	Peptide with sequence from the internal region of the protein sequence according to NP_038520.2.
Specificity:	This antibody recognizes Mouse Clusterin / ApoJ (312-325). Other species not tested.
Formulation:	Tris buffered saline, pH~7.3 containing 0.02% Sodium Azide as preservative and 0.5% BSA as stabilizer State: Aff - Purified State: Liquid purified Ig fraction
Concentration:	lot specific
Purification:	Ammonium Sulphate Precipitation followed by antigen Affinity Chromatography using the immunizing peptide
Conjugation:	Unconjugated
Storage:	Store undiluted at 2-8°C for one month or (in aliquots) at -20°C for longer. Avoid repeated freezing and thawing.
Stability:	Shelf life: one year from despatch.
Gene Name:	clusterin
Database Link:	Entrez Gene 12759 Mouse Q06890



[View online »](#)

Background:

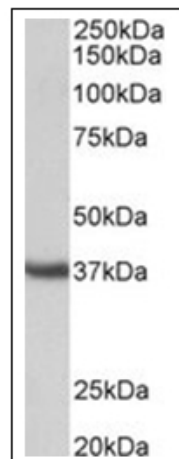
At least 9 distinct polymorphic forms of apolipoproteins are known. The apolipoproteins act as stabilizers of the intact lipoprotein particles. Quantitative measurements of HDL, LDL and VLDL particles in human serum are often used to estimate an individual's relative risk of coronary heart disease. In addition, quantitative immunological measurements of certain apolipoproteins (especially A-1 and B) have been suggested to be more accurate estimators of coronary heart disease than measurements of lipoprotein particles (especially HDL and LDL).

Apolipoprotein J is the major secreted product of Sertoli cells and is thought to play a critical role in spermatogenesis. The protein was shown to be a normal constituent of human blood and is also thought to be a control mechanism of the complement cascade. It prevents the binding of a C5b-C7 complex to the membrane of the target cell and in this way inhibits complement-mediated cytolysis.

Apolipoprotein J is overexpressed in human prostate and breast cancers and in squamous cell carcinomas. Suppression of Apolipoprotein J renders these cells sensitive to chemotherapeutic drug-mediated apoptosis. It has been proposed that elevated levels of Apolipoprotein J may promote oncogenic transformation and tumor progression by interfering with BAX proapoptotic activities.

Synonyms:

Clusterin, APOJ, CLI, KUB1, AAG4, NA1/NA2, SP-40,40

Product images:


Staining of Mouse Testis lysate (35ug protein in RIPA buffer) using APOJ Antibody at 0.3 ug/ml. Primary incubation was 1 hour. Detected by chemiluminescence.