

## Product datasheet for **AP31843PU-N**

### **B7H4 (VTCN1) (153-165) Goat Polyclonal Antibody**

#### **Product data:**

Product Type:	Primary Antibodies
Applications:	ELISA, WB
Recommended Dilution:	<b>Peptide ELISA:</b> 1/16000 (Detection Limit). <b>Western blot:</b> 0.1-0.3 µg/ml. Approx 28kDa band observed in Human Spleen lysates.
Reactivity:	Bovine, Canine, Human, Mouse, Rat
Host:	Goat
Clonality:	Polyclonal
Immunogen:	Peptide with sequence from the internal region of the protein sequence according to NP_078902.2.
Specificity:	This antibody recognizes VTCN1 (153-165).
Formulation:	Tris buffered saline, pH~7.3 containing 0.02% Sodium Azide as preservative and 0.5% BSA as stabilizer State: Aff - Purified State: Liquid purified Ig fraction
Concentration:	lot specific
Purification:	Ammonium Sulphate Precipitation followed by antigen Affinity Chromatography using the immunizing peptide
Conjugation:	Unconjugated
Storage:	Store the antibody undiluted at 2-8°C for one month or (in aliquots) at -20°C for longer. Avoid repeated freezing and thawing.
Stability:	Shelf life: one year from despatch.
Gene Name:	V-set domain containing T cell activation inhibitor 1
Database Link:	<a href="#">Entrez Gene 79679 Human Q7Z7D3</a>



[View online »](#)

**Background:**

B7-H4 is a costimulatory protein which is reported to function as a negative regulator of T-cell mediated immunity. Although B7-H4 binds an unknown receptor, it is thought to deliver an inhibitory signal to T-cells preventing their proliferation, cell cycle progression and interleukin-2 production. B7-H4 deficient mice are only minimally affected; suggesting B7-H4 is important in the fine tuning of the T-cell mediated immune response.

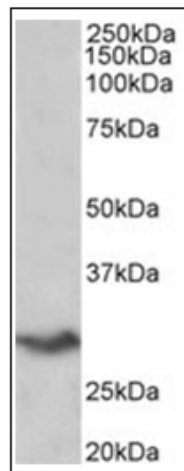
B7-H4 is expressed on activated T-cells, B-cells, monocytes and dendritic cells. Aberrant expression has been associated with cancers of the lung, breast and ovary in humans. B7-H4 could be a useful prognostic marker in Renal Cell Carcinoma (RCC).

**Synonyms:**

B7-H4, B7x, B7h.5, B7S1, UNQ659/PRO1291

**Note:**

Calculated Molecular Weight: 30.9kDa (NP\_078902.2).

**Product images:**

Staining of Human Spleen lysate (35ug protein in RIPA buffer) using VTCN1 Antibody at 0.2 ug/ml. Primary incubation was 1 hour. Detected by chemiluminescence.