

Product datasheet for **AP31826PU-N**

CYP39A1 (C-term) Rabbit Polyclonal Antibody

Product data:

Product Type:	Primary Antibodies
Applications:	ELISA, IF, IHC, WB
Recommended Dilution:	ELISA: 1/10000. Immunofluorescence: 1/100 - 1/500. Immunohistochemistry on Paraffin Sections. Western Blot: 1/500 - 1/1000.
Reactivity:	Human, Mouse
Host:	Rabbit
Isotype:	IgG
Clonality:	Polyclonal
Immunogen:	Synthetic peptide from Human Cytochrome P450 39A1.
Specificity:	This antibody detects endogenous levels of total Cytochrome P450 39A1 protein.
Formulation:	PBS (without Mg ²⁺ , Ca ²⁺), pH 7.4, 150 mM Sodium Chloride, 0.02% Sodium Azide and 50% Glycerol State: Aff - Purified State: Liquid purified Ig fraction
Concentration:	lot specific
Purification:	Immunoaffinity Chromatography
Conjugation:	Unconjugated
Storage:	Store the antibody undiluted at 2-8°C for one month or (in aliquots) at -20°C for longer. Avoid repeated freezing and thawing.
Stability:	Shelf life: one year from despatch.
Gene Name:	cytochrome P450 family 39 subfamily A member 1
Database Link:	Entrez Gene 56050 Mouse Entrez Gene 51302 Human Q9NYL5



[View online »](#)

Background:

The CYP39A1 gene encodes a member of the cytochrome P450 superfamily of enzymes. The cytochrome P450 proteins are monooxygenases which catalyze many reactions involved in drug metabolism and synthesis of steroids, cholesterol and other lipids. This endoplasmic reticulum protein is involved in the conversion of cholesterol to bile acids. Its substrates include the oxysterols 25-hydroxycholesterol, 27-hydroxycholesterol and 24-hydroxycholesterol.

Synonyms:

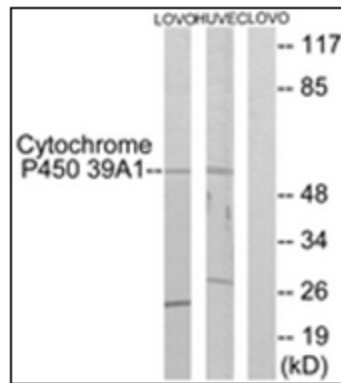
Cytochrome P450 39A1

Protein Families:

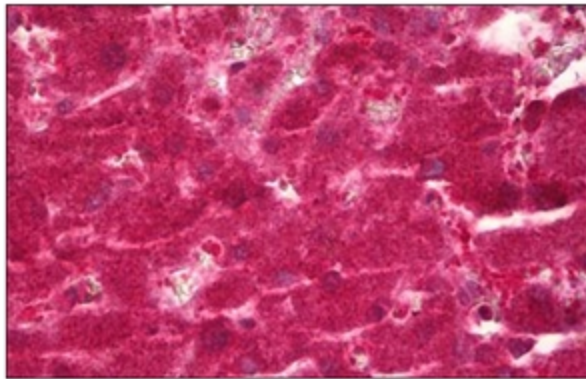
Druggable Genome, P450, Transmembrane

Protein Pathways:

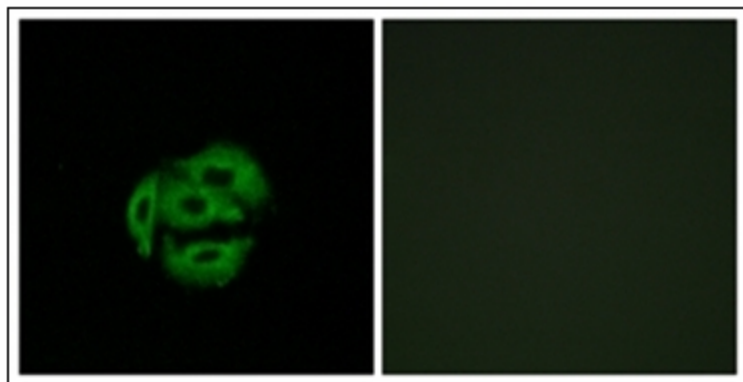
Primary bile acid biosynthesis

Product images:


Western blot analysis of extracts from LOVO/HuvEc cells, using CYP39A1 antibody. The lane on the right is treated with the synthesized peptide.



Formalin-Fixed, Paraffin-Embedded Human Liver stained with CYP39A1 antibody



Immunofluorescence analysis of A549 cells, using CYP39A1 antibody. The picture on the right is treated with the synthesized peptide.