

Product datasheet for **AP31825PU-N**

Vimentin (VIM) Chicken Polyclonal Antibody

Product data:

Product Type:	Primary Antibodies
Applications:	IF, IHC, WB
Recommended Dilution:	Western Blot. Immunocytochemistry. Immunohistochemistry. <i>Recommended Dilutions:</i> 1/2000-1/5000 for Western Blots. 1/1000-1/2000 for Immunohistochemistry and Immunocytochemistry using 2% paraformaldehyde-fixed tissues or cells. Quality Control: Each of the three antibodies was analyzed by Immunohistochemistry (at a dilution of 1/2000) using Fluorescein-labeled Goat anti-Chicken IgY (1/500 dilution, Cat.-No AP31795FC-N) as the secondary reagent.
Reactivity:	Human, Mouse
Host:	Chicken
Isotype:	IgY
Clonality:	Polyclonal
Immunogen:	Chickens were immunized with three synthetic peptide KLH conjugated corresponding to different regions of the Vimentin gene product, but are shared between the Human (NP_003371) and Mouse (NP_035831) sequences. Production: After repeated injections into the hens, immune eggs were collected, and the IgY fractions were purified from the yolks. These IgY fractions were then affinity-purified using a peptide column, and the concentrations of the eluates adjusted to 0.3 mg/ml. Finally, equal volumes of each of the three affinity-purified anti-peptide antibodies were mixed, and the preparation was filter-sterilized.
Specificity:	Recognizes Vimentin.
Formulation:	10mM PBS, pH 7.2 containing 0.02% Sodium Azide as preservative. State: Aff - Purified State: Liquid purified (filter sterilized) IgY fraction.
Concentration:	lot specific
Purification:	Affinity Chromatography using a peptide column.



[View online »](#)

Conjugation: Unconjugated

Storage: Store the antibody undiluted in the dark at 2-8°C.

Stability: Shelf life: one year from despatch.

Gene Name: vimentin

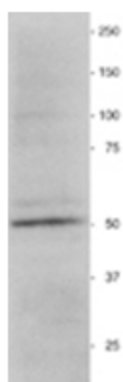
Database Link: [Entrez Gene 22352 Mouse](#)[Entrez Gene 7431 Human](#)
[P08670](#)

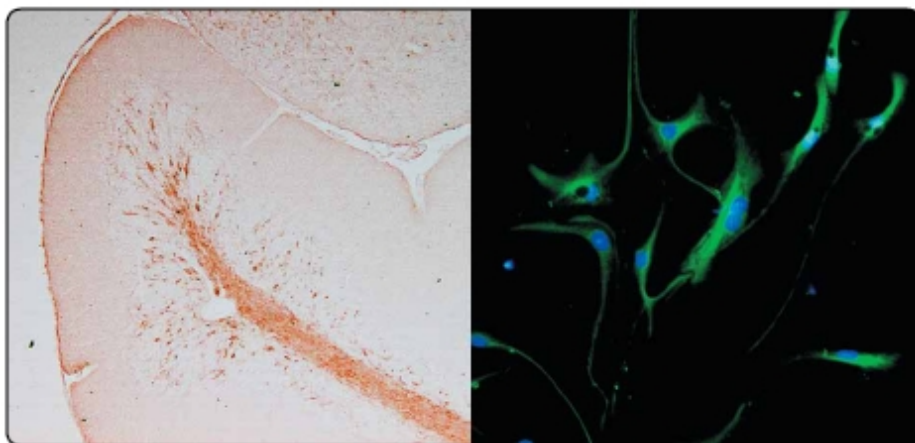
Background: Human vimentin is a 53,521 dalton protein (466 amino acids) expressed in many cell types of mesodermal origin, and is one of the intermediate filament types that form the cytoskeleton. In the embryonic nervous system, however, vimentin is expressed by migrating neural crest cells forming the PNS, and by neural stem cells of the CNS. In some forms of glioblastoma, vimentin is reexpressed by the tumor cells and serves as a general indicator of their undifferentiated state.

Synonyms: VIM

Protein Families: ES Cell Differentiation/IPS

Product images:





In the Left panel (a tissue section through an e18 Mouse cerebellum), Vimentin (brown staining) can be seen in immature astrocytes of the white matter, as well as in vascular endothelial cells. In the Right panel (cultured dissociated cells from an e13 Mouse brain), vimentin (green staining) can be seen forming the cytoskeleton of immature astrocyte progenitor cells. DAPI (blue staining) allows visualization of nuclei.