

Product datasheet for **AP31822PU-N**

Tau (MAPT) Chicken Polyclonal Antibody

Product data:

Product Type:	Primary Antibodies
Applications:	IF, IHC, WB
Recommended Dilution:	Western Blot. Immunocytochemistry. Immunohistochemistry. <i>Recommended Dilutions:</i> 1/20000-1/50000 for Western Blots. 1/10000-1/20000 for Immunohistochemistry and Immunocytochemistry using 2% paraformaldehyde-fixed tissues or cells. Quality Control: Both of these anti-peptide antibodies were analyzed by Immunohistochemistry (at a dilution of 1/20000) using Fluorescein-labeled Goat anti-Chicken IgY (1/500 dilution, Cat.-No AP31795FC-N) as the secondary reagent.
Reactivity:	Human, Mouse
Host:	Chicken
Isotype:	IgY
Clonality:	Polyclonal
Immunogen:	Antipeptide antibodies were generated in chickens against two sequences shared between the Mouse (P10637.3) and Human (P10636.5) gene products. Neither of these sequences contain phosphorylated serine or threonine residues, so these tau antibodies recognize both the euphosphorylated and hyperphosphorylated forms of Tau. Production: After repeated injections, immune eggs were collected, and the IgY fractions were purified from the yolks. These IgY fractions were then affinity-purified using a peptide column, and the concentrations of the eluates adjusted to 0.2 mg/ml. Finally, equal volumes of both of these affinity-purified anti-peptide antibodies were mixed, and the preparation was filter-sterilized.
Specificity:	Recognizes Tau.
Formulation:	10mM PBS, pH 7.2 containing 0.02% Sodium Azide as preservative. State: Aff - Purified State: Liquid purified (filter sterilized) IgY fraction
Concentration:	lot specific



[View online »](#)

Purification:	Affinity Chromatography.
Conjugation:	Unconjugated
Storage:	Store the antibody undiluted in the dark at 2-8°C.
Stability:	Shelf life: one year from despatch.
Gene Name:	microtubule associated protein tau
Database Link:	Entrez Gene 17762 Mouse Entrez Gene 4137 Human P10636

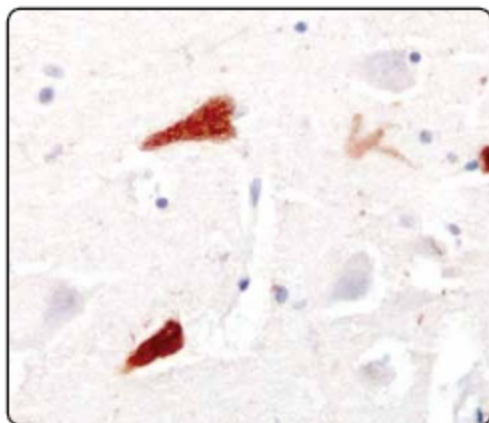
Background: Human Tau protein (a.k.a., “microtubule-associated protein tau isoform 1”) is a 78,902 dalton protein (758 amino acids) expressed in cortical neurons of the CNS. In normal individuals, tau contains moderate degrees of phosphorylation on various serine and threonine residues scattered throughout the N-terminal half of this protein. However in various neurodegenerative diseases, such as Alzheimer’s disease, Tau becomes hyperphosphorylated on these residues, leading to the pathological formation of intracellular “neurofibrillary tangles.” Such tangles are hallmarks of Alzheimer’s disease, as well as various other neurodegenerative diseases, collectively known as the “tauopathies.”

Synonyms: MAPTL, MTBT1, Microtubule-associated protein tau, PHF-tau, Neurofibrillary tangle protein, Paired helical filament-tau

Protein Families: Druggable Genome

Protein Pathways: Alzheimer's disease, MAPK signaling pathway

Product images:



Tissue section through the hippocampus of a patient diagnosed with Alzheimer's disease. Note the high concentrations of intracellular Tau immunoreactivity in pyramidal neurons (brown reaction product), as well as lower concentrations of reaction product in the neuropil. The slide was counterstained with hematoxylin. Picture courtesy of Dr. Randy Woltjer, Oregon Health & Sciences University.