

Product datasheet for **AP31821PU-N**

Synaptotagmin 1 (SYT1) Chicken Polyclonal Antibody

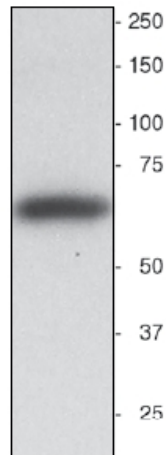
Product data:

Product Type:	Primary Antibodies
Applications:	IF, IHC, WB
Recommended Dilution:	Western Blot. Immunocytochemistry. Immunohistochemistry. <i>Recommended Dilutions:</i> 1/2000-1/5000 for Western Blots. 1/1000-1/2000 for Immunohistochemistry and Immunocytochemistry using 2% paraformaldehyde-fixed tissues or cells. Quality Control: Each of the four antibodies was analyzed by Immunohistochemistry (at a dilution of 1/2000) using Fluorescein-labeled Goat anti-Chicken IgY (1/500 dilution, Cat.-No AP31795FC-N) as the secondary reagent.
Reactivity:	Human, Mouse
Host:	Chicken
Isotype:	IgY
Clonality:	Polyclonal
Immunogen:	Four different antipeptide antibodies were generated in Chickens against sequences shared between the Mouse (NP_033332) and Human (NP_005630) gene products. Production: After repeated injections into the hens, immune eggs were collected, and the IgY fractions were purified from the yolks. These IgY fractions were then affinity-purified using a peptide column, and the concentrations of the eluates adjusted to 0.4 mg/ml. Finally, equal volumes of each of the four affinity-purified anti-peptide antibodies were mixed, and the preparation was filter-sterilized. Antibodies were affinity-purified and mixed in equal concentrations.
Specificity:	Recognizes Synaptotagmin-1.
Formulation:	10mM PBS, pH 7.2 containing 0.02% Sodium Azide as preservative. State: Aff - Purified State: Liquid purified (filter sterilized) IgY fraction.
Concentration:	lot specific
Purification:	Affinity Chromatography using a peptide column.



[View online »](#)

Conjugation:	Unconjugated
Storage:	Store the antibody undiluted in the dark at 2-8°C.
Stability:	Shelf life: one year from despatch.
Gene Name:	synaptotagmin 1
Database Link:	Entrez Gene 20979 Mouse Entrez Gene 6857 Human P21579
Background:	Human Synaptotagmin-1 is a 47,442 dalton protein (422 amino acids) associated with pre-synaptic terminals of the PNS and CNS. Synaptotagmin-1 binds calcium and initiates the fusion of vesicles with the pre-synaptic membrane. This protein is also believed to be the target of proteolytic activity associated with Botulinum neurotoxin A.
Synonyms:	SYT1, SVP65, SYT, Synaptotagmin1, Synaptotagmin I, SytI, p65
Protein Families:	Secreted Protein, Transmembrane

Product images:

Western blot showing a single Synaptotagmin band running at about 65 kDa