

## Product datasheet for **AP31819PU-N**

### PLP1 Chicken Polyclonal Antibody

#### Product data:

Product Type:	Primary Antibodies
Applications:	IF, IHC
Recommended Dilution:	<b>Immunocytochemistry.</b> <b>Immunohistochemistry.</b> <i>Recommended Dilutions:</i> 1/1000-1/2000 for Immunohistochemistry and Immunocytochemistry using 2% paraformaldehyde-fixed tissues or cells. <b>Quality Control:</b> The antibody was analyzed by Immunohistochemistry (at a dilution of 1/2000) using Fluorescein-labeled Goat anti-Chicken IgY (1/500 dilution, Cat.-No AP31795FC-N) as the secondary reagent.
Reactivity:	Human, Mouse
Host:	Chicken
Isotype:	IgY
Clonality:	Polyclonal
Immunogen:	Synthetic peptide KLH conjugated corresponding to a sequence shared between the Mouse (P60202) and Human (NP_000524) gene products. <b>Production:</b> After repeated injections, immune eggs were collected, the IgY fractions were purified from the yolks, and then affinity-purified using a peptide column. The concentrations of the eluates were then adjusted to 0.1 mg/ml, and the preparation was filter-sterilized.
Specificity:	Recognizes Proteolipid Protein (PLP).
Formulation:	10mM PBS, pH 7.2 containing 0.02% Sodium Azide as preservative. State: Aff - Purified State: Liquid purified (filter sterilized) IgY fraction.
Concentration:	lot specific
Purification:	Affinity Chromatography using a peptide column.
Conjugation:	Unconjugated
Storage:	Store the antibody undiluted in the dark at 2-8°C.
Stability:	Shelf life: one year from despatch.
Gene Name:	proteolipid protein 1



[View online »](#)

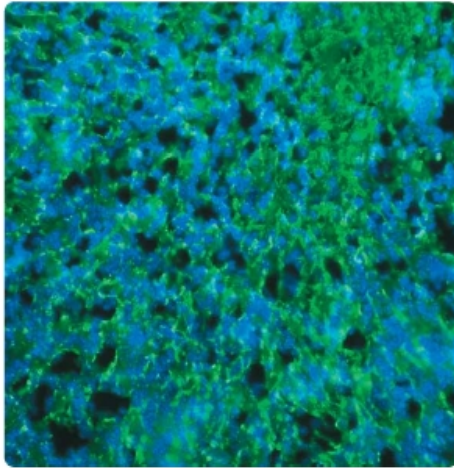
**Database Link:** [Entrez Gene 5354 Human P60201](#)

**Background:** Human PLP (also known as lipophilin) is a 29,946 dalton protein (277 amino acids) found in myelin of the CNS and PNS. Expressed by oligodendrocytes and Schwann cells, PLP stabilizes myelin by preventing lipid bilayer fusion, and aids in its compaction. Different mutations of the human PLP gene product result in two neurological disorders - Pelizaeus-Merzbacher disease and Spastic Paraplegia type 2.

**Synonyms:** Myelin proteolipid protein, Lipophilin, PLP

**Protein Families:** Druggable Genome, Transmembrane

**Product images:**



In this tissue section through an e13 Mouse brain, PLP (green staining) can be seen in immature oligodendrocytes of white matter tracts. DAPI (blue staining) allows visualization of nuclei.