

Product datasheet for **AP31818PU-N**

Peripherin Chicken Polyclonal Antibody

Product data:

Product Type:	Primary Antibodies
Applications:	IF, IHC, WB
Recommended Dilution:	Western Blot. Immunocytochemistry. Immunohistochemistry. <i>Recommended Dilutions:</i> 1/5000-1/10000 for Western Blots. 1/2000-1/5000 for Immunohistochemistry and Immunocytochemistry using 2% paraformaldehyde-fixed tissues or cells. Quality Control: The antibody was analyzed by Immunohistochemistry (at a dilution of 1/10000) using Fluorescein-labeled Goat anti-Chicken IgY (1/500 dilution, Cat.-No AP31795FC-N) as the secondary reagent.
Reactivity:	Rat
Host:	Chicken
Isotype:	IgY
Clonality:	Polyclonal
Immunogen:	Full-length recombinant Peripherin protein. Production: After repeated injections into the hens, immune eggs were collected, and the IgY fractions were purified from the yolks.
Specificity:	Recognizes Rat Peripherin. Other species not tested.
Formulation:	10mM PBS, pH 7.2 containing 1% BSA as stabilizer and 0.02% Sodium Azide as preservative. State: Aff - Purified State: Liquid purified (filter sterilized) IgY fraction.
Concentration:	lot specific
Purification:	Affinity Chromatography using a peptide column.
Conjugation:	Unconjugated
Storage:	Store the antibody undiluted in the dark at 2-8°C.
Stability:	Shelf life: one year from despatch.
Database Link:	P21807



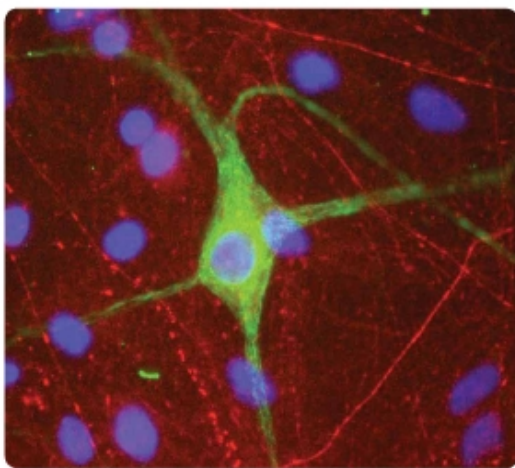
[View online »](#)

Background:

Human Peripherin is a 53,651 dalton protein (470 amino acids) expressed in all PNS neurons and some CNS neurons, including a subset of cortical neurons, hippocampal neurons, and ventral horn spinal cord motor neurons. At an ultrastructural level, peripherin immunoreactivity is associated with the neurofilament portion of the cytoskeleton, being particularly abundant in the cell body. Peripherin protein has been shown to undergo upregulation during periods of trophic stress in cultured neurons, and mutations of the peripherin gene have been associated with the neurodegenerative disease amyotrophic lateral sclerosis.

Synonyms:

PRPH, NEF4, PRPH1

Product images:

Dissociated cell culture prepared from neonatal dorsal root ganglia. Peripherin (green) stains neuronal cell bodies. As controls, Rabbit NFL antibodies (red) were used to costain neurites, and DAPI (blue) was used to demonstrate nuclei. Picture courtesy of