

Product datasheet for **AP31810PU-N**

Nes Chicken Polyclonal Antibody

Product data:

Product Type: Primary Antibodies

Applications: IF, IHC, WB

Recommended Dilution: **Western Blot.**
Immunocytochemistry.
Immunohistochemistry.

Recommended Dilutions:

1/2000-1/5000 for western blots.

1/10000-1/20000 for Immunohistochemistry and Immunocytochemistry using 2% paraformaldehyde-fixed tissues or cells.

Quality Control: Each of the three antibodies were analyzed by Immunohistochemistry (at a dilution of 1/20000) using Fluorescein-labeled Goat anti-Chicken IgY (1/500 dilution, Cat.-No AP31795FC-N) as the secondary reagent.

Reactivity: Mouse, Rat

Host: Chicken

Isotype: IgY

Clonality: Polyclonal

Immunogen: Three synthetic peptides KLH conjugated corresponding to different regions of the Mouse Nestin gene product (NP_057910), but are shared with the Rat (NM_012987) protein sequence.

Production: After repeated injections, immune eggs were collected, and the IgY fractions were purified from the yolks. These IgY fractions were then affinity-purified using a peptide column, and the concentrations of the eluates adjusted to 0.3 mg/ml. Finally, equal volumes of each of the three affinity-purified anti-peptide antibodies were mixed, and the preparation was filter-sterilized.

Specificity: Recognizes Nestin.

Note that the sequences of the Mouse and Human Nestin genes are divergent, and it is unlikely that antibodies raised against the Mouse sequence would recognize Human Nestin.

Formulation: 10mM PBS, pH 7.2 containing 0.02% Sodium Azide as preservative.

State: Aff - Purified

State: Liquid purified (filter sterilized) IgY fraction.



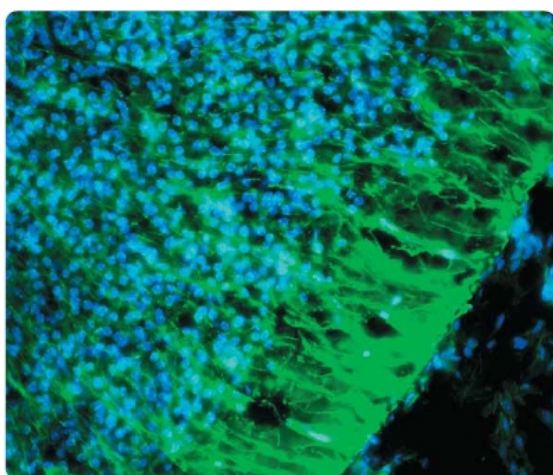
[View online »](#)

Concentration:	lot specific
Purification:	Affinity Chromatography using a peptide column.
Conjugation:	Unconjugated
Storage:	Store the antibody undiluted in the dark at 2-8°C.
Stability:	Shelf life: one year from despatch.
Gene Name:	nestin
Database Link:	Entrez Gene 25491 Rat Entrez Gene 18008 Mouse Q6P5H2

Background: Mouse Nestin is a 206,994 dalton protein (1864 amino acids) expressed in neural crest cells, CNS neural stems cells, as well as a few non-neural cell types in the embryo, including cells within the pancreatic islets of Langerhans and the limb bud. Nestin is an intermediate filament-associated protein, and contributes to the cytoskeleton.

Synonyms: NES, Nbla00170

Product images:



A tissue section through an e13 Mouse brain showing Nestin (green staining) in neural stem cells of the ventricular zone of the CNS. DAPI (blue staining) allows visualization of nuclei.