

## Product datasheet for **AP31804PU-N**

### Coronin 1a (CORO1A) Chicken Polyclonal Antibody

#### Product data:

Product Type:	Primary Antibodies
Applications:	IF, IHC
Recommended Dilution:	<b>Immunocytochemistry.</b> <b>Immunohistochemistry.</b> <i>Recommended Dilutions:</i> 1/1000-1/2000 for immunohistochemistry and Immunocytochemistry using 2% paraformaldehyde-fixed tissues or cells. <b>Quality Control:</b> Quality assurance analysis was performed using Immunohistochemistry (at a dilution of 1/2000) using Fluorescein-labeled Goat anti-Chicken IgY (1/500 dilution, Cat.-No AP31795FC-N) as the secondary reagent.
Reactivity:	Human, Mouse
Host:	Chicken
Isotype:	IgY
Clonality:	Polyclonal
Immunogen:	Synthetic peptide KLH conjugated corresponding to a sequence shared between the Mouse (NP_034028) and Human (NP_009005) gene products. After repeated injections, immune eggs were collected, the IgY fractions were purified from the yolks.
Specificity:	Recognizes Coronin 1a.
Formulation:	10mM PBS, pH 7.2 containing 0.02% Sodium Azide as preservative. State: Aff - Purified State: Liquid purified (filter sterilized) IgY fraction.
Concentration:	lot specific
Purification:	Affinity Chromatography using a peptide column.
Conjugation:	Unconjugated
Storage:	Store the antibody undiluted in the dark at 2-8°C.
Stability:	Shelf life: one year from despatch.
Gene Name:	coronin 1A



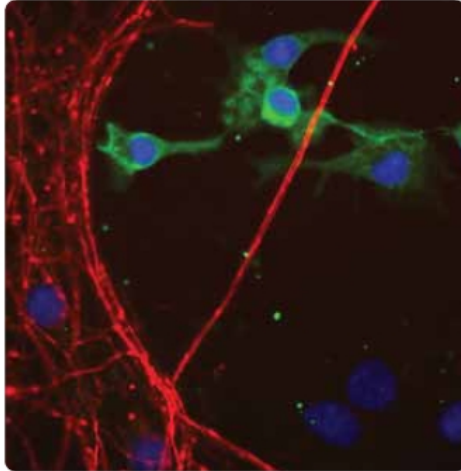
[View online »](#)

**Database Link:** [Entrez Gene 12721 Mouse](#)[Entrez Gene 11151 Human](#)  
[P31146](#)

**Background:** Human Coronin 1a is a 51,026 dalton protein (461 amino acids) selectively expressed in cells involved in immune surveillance throughout the body, including activated microglial cells of the CNS. It is a member of the WD40 (tryptophan-aspartate) gene family, which includes the  $\beta$  subunit of the trimeric G proteins as the prototype. Its function is presumably in membrane structural reorganization accompanying antigen presentation.

**Synonyms:** Coronin-like protein p57, Coronin-like protein, CORO1A, CORO1, Clipin-A, TACO

**Product images:**



Dissociated cell culture from a neonatal Mouse brain showing Coronin 1a (green staining) of microglial cells. These cultures were counter-stained with Rabbit antibodies against NFM (neurofilament, red staining), a neuronal marker, as well as DAPI (blue staining), a marker of nuclei. Picture courtesy of Dr. Gerry Shaw, University of Florida.